

• SIMBRAH NEWS •

Brought to you by American Simbrah Breeders

Simbrah meets the challenges

By Martha Hollida Garrett

Regardless of the size of the operation, Simbrah bulls are proving their worth in pastures across the southern half of the United States and helping programs meet the challenges of producing beef.

Paul Estes and Cliff Marshall are in two different geographic areas of the Southwest and run two very different types of operations. Estes is a full-time cattleman, running lots of cattle in big country and Marshall is a weekend rancher with a fulltime job in a major Texas city, running a small group of cattle on limited acreage. Both use Simbrah bulls. Both like the results they are getting and how the breed has responded to their individual challenges.

The Estes family has been running commercial cattle on the Texas/Oklahoma line since 1897. The family has cattle on both sides of state line, and claim both Wellington, Texas and Hollis, Oklahoma as home. In 1980, his dad, Bill, added a small Simmental herd; then in 1985, they purchased a one-

quarter Simmental x three-quarter Brahman bull from the R.A. Brown Ranch and began breeding up to Simbrah.

Today their cattle program includes 200 commercial Simbrah females and 50 commercial Fleckvieh Simmentals. The drought has been hard in the Texas Panhandle/Southwest Oklahoma and their current numbers are about half of previous stocking rates. They continue to utilize Simbrah bulls on the herd and retain ownership of the calves through harvest.

"We tried other breeds, but we like the added weight from the Simmental side and need the Brahman influence in our females for the maximum hybrid vigor. She is a good mother, milks strong, her calves grow fast, require less maintenance since they are insect and disease resistant and they forage well. I'm in love with the Simbrah cow and she has treated our family operation well," describes Estes, who is 1985 Texas Tech graduate with a degree in animal science.

The mature cowherd is

mated to almost exclusively Simbrah bulls, as they have purchased a few Simmental bulls from Buzzard Hollow Ranch, Arnold Brothers and R.A. Brown. Their Simbrah bulls over the years have been purchased from RX Simbrah Ranch, La Muneca Cattle Co. and most recently Pine Ridge Ranch. They have purchased some groups of heifers at various times, but they raise the majority of their replacement heifers and they mate all virgin heifers to Red Angus bulls, although none of those resulting females are retained.

Estes knows exactly what he wants in a bull when he goes to make his selections.

"I look at birth weight and calving ease first. You don't need calving problems in this country and we don't have time for them. I've found most breeders are doing a really good job with weaning and yearling weights, so my next concern is carcass quality and marbling. We own our calves all the way to the packer, so carcass is critical," he explains.

They calve in February and March and wean their calves in October and November. Their females are expected to cover a lot of ground, as with the drought the running capacity is now close to one cow to 40 acres. They expect their cows to calve on their own, take care of themselves and the calf, and wean that calf at above 50% of their mature weight, regardless of the conditions.

The Estes family backgrounds their calves for 30-45 days post weaning and then all the steer calves and the remaining heifers are sent to Cattle Town Feeders, Hereford, Texas.

"We retain ownership on all our calves and we utilize the data we get back. Our calves over the years have done real well, as over 90% are YG 1's and 2's, with quality grades predominately Choice and High Select and our feed conversion rate is routinely some of the best in each feeding period. Our cost of gain on the Simbrah calves is 10-15 cents less a pound than the industry average," says Estes.

Carcass improvement has been a key focus in the last few years.

"Over the past six years, we've added five bulls from Pine Ridge Ranch's pro-



Cliff Marshall along with his daughter, Kristin at the family's operation near Giddings, Texas.

gram, as they are very involved in identifying carcass traits in their registered Simbrahs," says Estes.

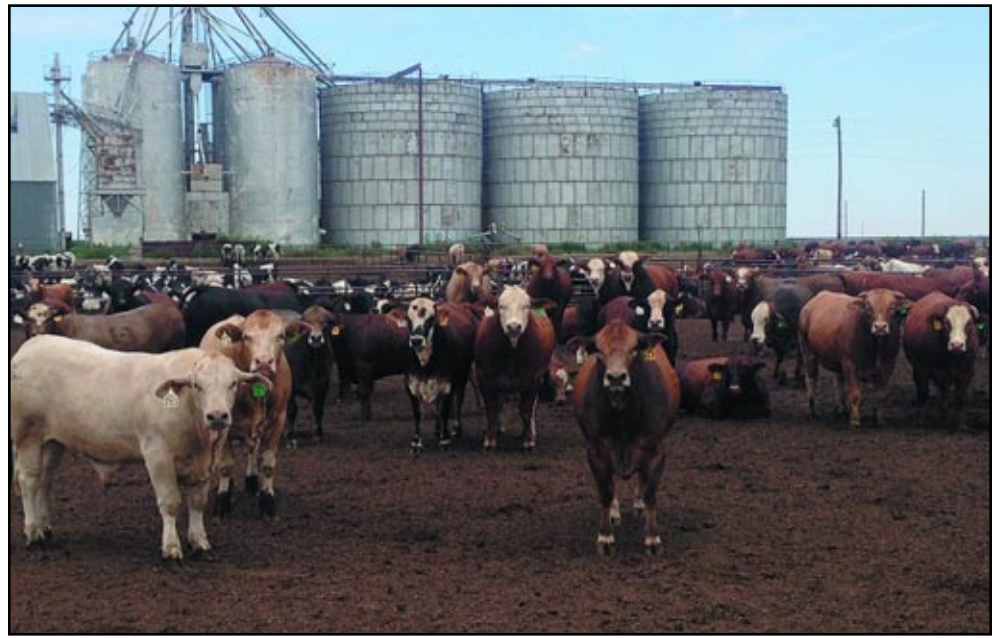
The Estes family today includes four generations of the family, Paul and his wife, Amy, along with his parents, Bill and Alcie, and his grandmother Paulene Estes. Then Paul and Amy have three children, who all grew up on the ranch and were active in 4-H and FFA. Their oldest son, Ben graduated from Texas Tech with an animal science degree and was a member of Tech's National Champion Meats Judging Team.

He then graduated from Oklahoma State University's Veterinary Medicine School this past May. He practices in Hollis, Oklahoma and is very involved in the family ranch. Their daughter, Lucy also a graduate of Texas Tech, recently married Cole Brown and is finishing her clinical work for a masters in speech therapy from West Texas A&M. She and Cole plan on staying involved with Simbrahs and the ranch. Their youngest son, Will, a senior this fall at Hollis High School, also has future plans for

(Continued on page 8)



The Estes family have been in the cattle business since 1897 and today includes four generations: (L to R): Alcie and Bill Estes, Lucy Estes Brown and her husband Cole Brown, Amy and Paul Estes, Will Estes, Sara Settlemire, who is the finance' of Ben Estes. Seated in front is Paulene Estes.



The Estes family retains ownership on all their Simbrah sired calves and has for many years. Their data reflects that over 90% have graded YG 1's and 2's, with quality grades predominately Choice and High Select. These Simbrah calves were photographed in early August at Cattle Town Feeders.

We Breed The Kind Of Simbrah You Want And The Kind That Will Work



"Nothing has a bigger influence on your bottom line than Fertility—No calf, no profit. Next biggest influence is Performance—More pounds and more money per pound. We produce replacement heifers that make a profit..."

Jud Flowers

When you are in the market for registered Simbrah replacement females and bulls, we invite you to come to Monte Christo!

Monte Christo Ranch

Jud & Margie Flowers
12111 N. Bryan Rd. • Misson, Texas 78573
956/207-2087
judf@lonestarcitrus.com

NEWS You Can Use...

Consignor information for all breed events

Fort Worth Commercial Female Sale

Entry forms for nominations will be available mid September. Contact Robert Schacher, 817/219-0102 to be placed on the mailing list. Nomination forms are due December 1, 2012 however, if you want to be considered as a consignor, you must advise him of your intent to participate at the sale and inform him on the number of heifers that will be entered. Heifers will be screened for the sale around mid to late October.

San Antonio All Breed Bull Sale and

All Breed Heifer Sale

Entry forms for nomi-

nations are available from October 1st to October 15th for the sale at the San Antonio Livestock Show in February. Evaluation committee will view all possible candidates prior to acceptance into the sale. Previous consignors have first choice to participate in sale.

Contact Jim Banner or Michael Sturgess 210/524-9697 for all the specifics and nomination forms.

Houston Livestock Show

All Breed Bull Sale and Commercial Sale

Contact Houston Livestock Show and Rodeo, Livestock Department for details 832/667-1000.

Simbrah juniors attend industry event

Five juniors, who are involved in the Simbrah

breed, recently attended the Texas A&M Beef Cattle Short Course. They participated in the junior segment of the industry event, which attracted over 1,400 cattle producers to Texas A&M University August 5-7th. The juniors attended sessions on cattle management practices, as well as spent time in the meats lab. The group, all from the Rio Grande Valley area, were brought to the event by their 4-H leaders, Tonya Hill and Ana Salinas.

La Muneca to host 26th Annual Jr. Round Up

Linn, TX – "On Saturday, October 5th, starting at 9:00 a.m., La Muneca Cattle Co. will proudly be hosting our 26th Annual Jr. Round Up & LMC Futurity, states LMC owner, Carlos X. Guerra. There will be speakers on selection of cattle and hay, judging, feeding, fitting, showmanship, goal setting, leadership, how to be happy, how to prepare for Simbrah Round Up, why I am in the restaurant business and the future of women in agriculture. Special presentations will be made by Brad Cowan, Tonya Hill, Leslie Harris,

(Continued on page 3)



Pictured (l to r) Brody Hill, Amanda Salinas, Matthew Salinas, Arianna Cantu and Olivia Vela attended the Texas A&M Beef Cattle Short Course.



LMC WFC Wave Amigo

This is a polled purebred son of Smith Nu Wave II—one of the all time highest ranking EPD bulls in Simbrah. His dam, LMC Diva is recognized as one of the greatest producers in the breed. The mating of Nu Wave and Diva has been tremendous. Wave Amigo is a full sib to Dream Girl, the National and International Champion Female, who sold for \$42,000, then one of her first daughters sold for \$40,000 this past spring. He is also a full sib to Rita, who sold for \$25,000. Wave Amigo is a proven bull and his offspring have done very well in the show and sale rings. His EPDs reflect a top 2% ranking for weaning and TI; top 5% for yearling; top 10% for docility, carcass weight, and API; and top 15% ranking for marbling. His first calves for us are arriving this fall and we're excited.

Smith McCrary Stylin 105Z

We just purchased this polled, purebred female this Spring. She is sired by Smith Always In Style, a Dream On x Smith Priceless bred son. Priceless of course is one of the most noted and sought after lines in the breed as over a quarter of a million dollars has been generated by her progeny. This granddaughter has that same appeal. 105Z's dam is out of one of Smith Genetics' top cow families, Smith Annie May. She is a Nu Approach daughter, which represents a new bloodline to the breed. We have already flushed this female to Smith Satisfies.



WE'VE SET
OUR SIGHTS
ON QUALITY!

Mark your calendars!

7N RANCH WILL
HAVE LOTS IN BOTH
SALES!



October 26
Smith Genetics
Giddings, Texas

the *Elite*

September 21
Hagan Cattle Co
Yoakum, Texas

7N Ranch is not just raising Simbrah cattle, we're raising them with quality at the forefront of every decision we make. In this day and time, of limited forage, high feed and fuel prices, it's imperative that our capital be spent on quality genetics that can improve our program and produce offspring that will be in demand.

We've made substantial additions to our program in the past couple of years and we're pumped about we have on the ground and coming.

We invite you to visit both our locations in Falls City and Donna, and see what our vision of quality looks like!

Nieschwietz

7N Ranch

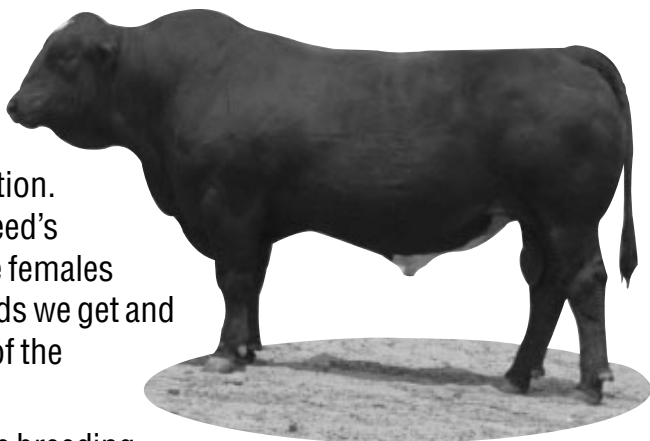
Pete Nieschwietz
P.O. Box 303

Falls City, Texas 78113
956/460-6002

pjnieschwietz@sbcglobal.net

Still Raisin' Simbrahs!

For more than three decades, the Sklar family has been utilizing Simbrah genetics in our operation. We appreciate the breed's longevity, the way the females milk, the added pounds we get and the market potential of the calves we produce.



**Our new herd sire-
LMC WFC Goldminer 5U/419**

We recently added the breeding power of La Muneca's LMC WFC Goldminer 5U-419 to our program. He's a polled purebred bull and is black. He is sired by Smith James Outlaw and out of a Goldmine bred daughter.

He's loaded with bone, very clean sheathed and carries lots of muscle. We're excited about the outcross genetics he brings to our program.

SKLAR AND SON-YOUR SOURCE FOR SIMBRAH BULLS AND SIMBRAH SIRED COMMERCIAL FEMALES

*Call us today to discuss our program and
how our cattle can work for you!*

Sklar and Son

Darrell and Mary Sklar • Shane and Jill Sklar
736 FM 234N • Edna, Texas 77957 • 361/782-8234

News...

(Continued from page 2)

Larry Delgado, Fred Grahmann, Amelia & Robert Stavinoha, Kallie Fuchs, Victor & Carlos X. Guerra Jr.

Adults and three age groups of juniors will have the opportunity to judge four classes of Simbrah, Brahman and Simbravieh cattle, two classes of hay plus a weight-guessing contest. Seventy-five juniors will win \$750 in premiums sponsored by the Darryl Raub Family plus be in the drawing for over 100 door

prizes donated by many local businesses, including Martin's Farm & Ranch, Farm & Ranch in San Isidro-Kito Saenz, Hidalgo County Farm Bureau, Mueller Inc.-Frank Trevino, Chorizo de San Manuel, Creative Awards, San Isidro FFA-Raul Hinojosa, Rio Grande City FFA-Randy Lee Lara, Tandy's, La Muneca and the families of Dr. Oscar Alvarez, Oscar Garza, Benny Cano, Benjamin Hill and Doug Lightfoot. The average attendance thru the years has been over 300 kids, parents and

leaders. The LMC Special Awards of Volunteer, Booster and Educators of the Year will be awarded at the Round Up.

The Annual La Muneca Futurity will conclude the day's events with over \$9,000 in prize money and buckles. Half of this money will be awarded in showmanship. Judges will be Dean Fuchs (cattle) and Kallie Fuchs (showmanship).

The eighth annual LMC Customer Appreciation Dinner will be held at the conclusion of the LMC

(Continued on page 14)

Our goal at Mossy Creek Ranch is to produce the highest quality, efficient, heat tolerant Simbrah, while maintaining the maternal, milking traits and carcass quality of the Simbrah breed and to do it naturally.



**MOSSY CREEK
RANCH**
SIMBRAH NATURALLY

KEVIN KENT
2595 Lothridge Rd
Cleveland, GA 30528
T. +1 706-344-2355
E. kevinwkent@gmail.com

We're Taking Our Program To The

Status quo won't work in today's economic beef climate. In the past year, we've added some young bulls—fresh genetics to our sire line-up, so we can take our program to the next level and put calves on the ground that can add economic value for our customers. Just take a look at our sire additions and check out the lot we're offering at The Elite Sale.

NEXT LEVEL



Smith XtraOrdinary

Sired by Smith Isgrig Charismatic, who ranks in the top 1% for seven traits in the breed, including carcass weight. XtraOrdinary is a Smith Nu Wave II grandson and out of Smith Madam W, a Dream On daughter. His EPDs rank in the top 1% for calving ease, API and TI; top 2% for birth and weaning; top 4% for yearling; top 5% for maternal calving ease and top 15% for maternal weaning weight, carcass weight and marbling. Owned with Smith Genetics and Southwestern Farms.



RFI Real Deal

Sired by Smith Evan and out of an Also N Red daughter we raised. His EPDs rank him in the top 2% for calving ease and API; top 3% for TI, top 10% for birth, weaning, and yearling; top 15% for carcass weight and top 20% for maternal weaning weight. He's polled and was the reserve bull calf champion at the International Show. Owned with Smith Genetics, Burch Farms, Diamond RF Farms and Southwestern Farms.



Smith Wentz Up Top Z103

He's a son of Smith Nu Wave II and the great LMC Diva cow, who is recognized as one of the greatest females in the breed. Up Top is polled and ranks in the top 1% of the breed for weaning and TI; top 3% for yearling; top 5% for carcass weight, top 10% for maternal weaning weight, docility, and API, top 15% for marbling and top 20% for REA. Owned with Smith Genetics.



Smith Stout N Black

Black, polled Simmental sire. He is sired by Dream On, who was one of the most proven and popular bulls ever in the Simmental breed and his dam goes back to the great Power Drive bull. We had used his full brother Smith Also N Red heavily before his death and we were so impressed with those calves, we wanted more of this mating for our program. He ranks in the top 10% of the breed for calving ease, stayability, and API, while ranking in the top 15% for yield grade and top 20% for birth and marbling. Owned with Smith Genetics.

**Also watch for our offering in the
Simbrah Synergy Sale, October 26th**



REAVIS FARMS, INC.

*Performance Tested Simbrah Bulls For Sale At The Ranch
Sargeant and Nu Wave Calves Available*

Wayne and Jim Bob Reavis

6801 W. Miles 7 Road • Mission, Texas 78574 • 956/585-6831
www.reavisfarms.com • JWReavis@aol.com

the Elite

Reavis Farms is offering two frozen embryos out of our donor Topanga and Smith NF Simply Great.

These will be full sibs to RFI Miss Debutante, who is pictured. Debutante was the International Intermediate Champion. The resulting offspring from this mating will combine some of the most powerful genetics in the breed as Smith Simply Great is a Dream On son out of the famed Madam X. Topanga is a young donor, who is just now making an impact on the breed, and Simply Great has already established himself by siring such breed greats as Smith Satisfies and Smith Sweet Bella. Don't miss this chance to get in on the ground floor of some championship genetics. The Elite Sale is September 21st at Hagan Cattle Company, Yoakum, Texas.



RFI Miss Debutante

Taking a look at the numbers...

Fall 2013 Simbrah EPDs

The American Simmental Association (ASA), who maintains the registry and Expected Progeny Differences (EPDs) database for the Simbrah breed, has published the Fall 2013 EPDs. We have provided the top 12 rankings for each trait based on sires, who have had 10 calves born within the last two years. EPDs are estimates of how a bull or cow's future progeny will perform, on average, for a given trait. They provide estimates of the genetic value of an animal as a parent. Specifically, differences in EPDs between two individuals of the same breed predict differences in performance between their future offspring when each is mated to animals of the same average genetic merit. They provide a tool to allow breeders and bull buyers a calculated way to measure predicted performance.

If you wish to learn more about Simbrah EPDs, as well as see breed averages, visit www.simmental.org and view the tab titled, herdbook services.

Fall 2013 Simbrah Calving Ease Trait Leaders

Rank	ASA No	Name	DOB	Breed Codes	EPD	Acc
1	2347626	FEA REX	4/5/06	3/4 SM 1/4 BR	10.5	0.31
2	1065880	CR HONCHO LAD 249S	12/13/84	5/8 SM 3/8 BR	10.4	0.51
3	2400752	SMITH NF SIMPLY GREAT	10/10/06	3/4 SM 1/4 BR	9.7	0.48
4	2526677	RFI SMITH THUNDERSTRUCK	4/5/09	3/4 SM 1/4 BR	9.6	0.35
5	2252007	LMC MAGNUM 5M/486	10/27/02	5/8 SM 3/8 BR	9	0.46
6	2401512	PVF CARLTON 744	3/3/07	5/8 SM 1/4 AN 1/8 BR	8.3	0.37
7	2283690	LMC RED MOVES 3P/295	12/27/04	3/4 SM 1/4 BR	8.2	0.61
8	2537907	LMC RHINO 5W/367	11/18/09	5/8 SM 3/8 BR	8.1	0.38
9t	2467353	TSC CLASS ACT	11/4/08	5/8 SM 3/8 BR	8	0.29
9t	2372264	HAGAN MCDREAMY 53S	7/18/06	3/4 SM 1/4 BR	8	0.31
11t	2344033	SMITH NU APPROACH	3/10/04	3/4 SM 1/4 BR	7.9	0.61
11t	2435393	SMITH EVAN	2/12/08	5/8 SM 3/8 BR	7.9	0.42

Fall 2013 Simbrah Birth Weight Trait Leaders

Rank	ASA No	Name	DOB	Breed Codes	EPD	Acc
1	2567612	RX CINNAMON X041	4/23/10	5/8 SM 3/8 BR	-0.7	0.39
2	2381562	RX CINNAMON	12/10/06	5/8 SM 3/8 BR	-0.6	0.74
3	2347626	FEA REX	4/5/06	3/4 SM 1/4 BR	0	0.34
4	2435393	SMITH EVAN	2/12/08	5/8 SM 3/8 BR	0.1	0.51
5t	2537907	LMC RHINO 5W/367	11/18/09	5/8 SM 3/8 BR	0.2	0.49
5t	2467353	TSC CLASS ACT	11/4/08	5/8 SM 3/8 BR	0.2	0.37
7	2381099	SMITH ISGRIG CHARISMATIC	2/26/07	5/8 SM 3/8 BR	0.3	0.66
8	2449149	PVF MAVERICK 853	3/12/08	5/8 SM 3/8 BR	0.4	0.5
9	2421288	JHC TUFF BOY	12/15/06	5/8 SM 3/8 BR	0.5	0.51
10t	1065880	CR HONCHO LAD 249S	12/13/84	5/8 SM 3/8 BR	0.8	0.66
10t	2344033	SMITH NU APPROACH	3/10/04	3/4 SM 1/4 BR	0.8	0.65
12	2305018	SMITH NU WAVE II	12/10/04	3/4 SM 1/4 BR	0.9	0.78

Fall 2013 Simbrah Weaning Weight Trait Leaders

Rank	ASA No	Name	DOB	Breed Codes	EPD	Acc
1	2305018	SMITH NU WAVE II	12/10/04	3/4 SM 1/4 BR	116.5	0.73
2	2381099	SMITH ISGRIG CHARISMATIC	2/26/07	5/8 SM 3/8 BR	102.8	0.53
3	2545552	SMITH HAGAN TSUNAMI	3/5/09	5/8 SM 3/8 BR	99.8	0.25
4	2162556	NF SMITH SARGEANT	2/18/02	3/4 SM 1/4 BR	93	0.8
5	2465690	LMC WFC WAVE AMIGO 5U/95	2/3/08	5/8 SM 3/8 BR	89.3	0.27
6	2465658	LMC WFC MOOSE 5U/57	1/27/08	5/8 SM 3/8 BR	86.4	0.31
7	2465659	LMC WFC WAVE AMIGO 5U/58	1/27/08	5/8 SM 3/8 BR	85.7	0.57
8	2495219	PRR DR. DAZZLE 911U	12/2/08	5/8 SM 3/8 BR	81.8	0.48
9	2242894	WCC PRINCE P01	3/2/04	5/8 SM 3/8 BR	81.5	0.67
10	2348637	SMITH TOP SHELF	5/31/06	5/8 SM 3/8 BR	81.2	0.32
11	2435393	SMITH EVAN	2/12/08	5/8 SM 3/8 BR	80.4	0.36
12	2296440	PRR BLACK MAJOR 25R	2/9/05	5/8 SM 3/8 BR	80.3	0.35

Fall 2013 Simbrah Yearling Weight Trait Leaders

Rank	ASA No	Name	DOB	Breed Codes	EPD	Acc
1	2305018	SMITH NU WAVE II	12/10/04	3/4 SM 1/4 BR	137.6	0.72
2	2381099	SMITH ISGRIG CHARISMATIC	2/26/07	5/8 SM 3/8 BR	132.7	0.48
3	2162556	NF SMITH SARGEANT	2/18/02	3/4 SM 1/4 BR	125.6	0.8
4	2545552	SMITH HAGAN TSUNAMI	3/5/09	5/8 SM 3/8 BR	124.6	0.25
5	2473077	ZZ JALAPENO U889	2/18/08	5/8 SM 1/4 BR 1/8 AR	121.3	0.53
6	2495219	PRR DR. DAZZLE 911U	12/2/08	5/8 SM 3/8 BR	120.7	0.47
7	2465690	LMC WFC WAVE AMIGO 5U/95	2/3/08	5/8 SM 3/8 BR	113	0.27
8	2488653	J7N VICMAR 420	9/25/08	5/8 SM 3/8 BR	111.7	0.55
9	2236625	PRR POTENTIAL 108N	12/2/03	5/8 SM 3/8 BR	110.9	0.48
10	2242894	WCC PRINCE P01	3/2/04	5/8 SM 3/8 BR	109.8	0.66
11	2411914	SMITH RONEN	5/15/07	5/8 SM 3/8 BR	109.6	0.34
12	2439925	PRR TARGET 826T	9/10/07	5/8 SM 3/8 BR	109.5	0.57

Fall 2013 Simbrah Maternal Calving Ease Trait Leaders

Rank	ASA No	Name	DOB	Breed Codes	EPD	Acc
1	2409813	PRR PAPA 702T	2/19/07	5/8 SM 3/8 BR	13.6	0.46
2	2144815	LM FULL HOUSE 5L/133	10/8/01	5/8 SM 3/8 BR	12.7	0.74
3	2513493	PRR CHOICE 565W	3/22/09	5/8 SM 3/8 BR	12	0.29
4t	2173119	PRR PIONEER 961M	3/4/02	3/4 SM 1/4 BR	11.9	0.74
4t	2537907	LMC RHINO 5W/367	11/18/09	5/8 SM 3/8 BR	11.9	0.25
4t	2439928	PRR GOOD HOPE 156T	11/2/07	5/8 SM 3/8 BR	11.9	0.31
7t	2372264	HAGAN MCDREAMY 53S	7/18/06	3/4 SM 1/4 BR	11.8	0.28
7t	2408389	LMC P43 AMIGO 3T/65	3/18/07	3/4 SM 1/4 BR	11.8	0.4
9	2496648	TRIPLE P MAIN DREAM	10/31/08	3/4 SM 1/4 BR	11.7	0.26
10	2285747	PRR IRISH PIONEER 306P	9/12/04	3/4 SM 1/4 BR	11.6	0.42
11	2341008	PRR PREVAIL 774S	1/17/06	5/8 SM 3/8 BR	11.5	0.71
12	2446419	PRR HOUSE 818T	9/1/07	5/8 SM 3/8 BR	11.1	0.26

Fall 2013 Simbrah Maternal Milk Trait Leaders

Rank	ASA No	Name	DOB	Breed Codes	EPD	Acc
1	2446550	LMC LF GOLIATH T211	11/2/07	3/8 SM 3/8 BV 1/4 BR	39.9	0.28
2	2403665	SSS PEYTON 395T	9/5/07	5/8 SM 3/8 BR	34.9	0.27
3	2106639	PSR VALENTINO L118	2/14/01	5/8 SM 3/8 BR	33.5	0.75
4	2376242	DOUBLE D BLACK CLOUD	11/20/06	5/8 SM 3/8 BR	32.7	0.21
5	2399159	RX AMS T706	3/8/07	3/4 SM 1/4 BR	32.4	0.34
6	2279820	PSR PROTOTYPE R103	1/23/05	5/8 SM 3/8 BR	32.1	0.41
7	2403131	BCRC POWER PAULO 737	2/23/07	3/4 SM 1/4 BR	32	0.31
8	2567609	RX RED X031	3/20/10	5/8 SM 1/4 BR 1/8 MX	31.9	0.21
9	1065880	CR HONCHO LAD 249S	12/13/84	5/8 SM 3/8 BR	31.8	0.4
10	2279829	PSR ABRAHAM R118	3/27/05	5/8 SM 3/8 BR	31.4	0.39
11	2408389	LMC P43 AMIGO 3T/65	3/18/07	3/4 SM 1/4 BR	31.3	0.39
12	2519174	SSS HES GOOD 444W	8/15/09	5/8 SM 3/8 BR	30.7	0.25

Fall 2013 Simbrah Maternal Weaning Weight Trait Leaders

Rank	ASA No	Name	DOB	Breed Codes	EPD	Acc
1	2381099	SMITH ISGRIG CHARISMATIC	2/26/07	5/8 SM 3/8 BR	67.3	0.32
2	2305018	SMITH NU WAVE II	12/10/04	3/4 SM 1/4 BR	65.2	0.67
3	2404882	SMITH RFI TROUBLE MAKER	4/19/07	5/8 SM 3/8 BR	63	0.25
4	2545552	SMITH HAGAN TSUNAMI	3/5/09	5/8 SM 3/8 BR	62.4	0.22
5	2162556	NF SMITH SARGEANT	2/18/02	3/4 SM 1/4 BR	62.2	0.79
6	2391576	SMITH RFI NF THE BOSS	8/5/06	5/8 SM 3/8 BR	62.1	0.28
7	2495221	PRR PLENTIFUL 914U	12/9/08	5/8 SM 3/8 BR	61.9	0.26
8	2518598	6G/LMC RAJIN CAJUN W908	3/4/09	3/4 SM 1/4 BR	61.6	0.22
9	2341008	PRR PREVAIL 774S	1/17/06	5/8 SM 3/8 BR	61.2	0.73
10	2490152	JHC HOUSE OF SOUL	12/7/08	5/8 SM 3/8 BR	61	0.22
11	2411914	SMITH RONEN	5/15/07	5/8 SM 3/8 BR	60.9	0.28
12	2495225	PRR PREVAILANCE 961U	10/10/08	5/8 SM 3/8 BR	60.8	0.28

Fall 2013 Simbrah Docility Trait Leaders

Rank	ASA No	Name	DOB	Breed Codes	EPD	Acc
1	2470233	ZZ MR FULL FIGURES U907	3/9/08	3/4 SM 1/4 BR	18.5	0.27
2	2449178	PVF TECH CADENCE 806	2/19/08	5/8 SM 3/8 BR	12.8	0.15
3	2449412	J7N VORTEX U05	2/5/08	5/8 SM 3/8 BR	12.6	0.06
4	2371553	WAR R811	9/12/05	5/8 SM 3/8 BR	12.5	0.01
5	2326864	LMC JOHNNIE WALKER 5R179	9/21/05	5/8 SM 3/8 BR	12.4	0.06
6	2439924	PRR PALISADE 813T	8/30/07	5/8 SM 3/8 BR	12.3	0.23
7	2305018	SMITH NU WAVE II	12/10/04	3/4 SM 1/4 BR	12	0.23
8	2375169	MR STRACK S851	9/1/06	5/8 SM 3/8 BR	11.5	0.19
9t	2399162	RX T726	4/1/07	5/8 SM 1/4 BR 1/8 MX	11.3	0.05
9t	2465869	LMC LF BRAVEHEART T195	10/29/07	3/8 SM 3/8 BV 1/4 BR	11.3	0.01
11t	2465658	LMC WFC MOOSE 5U/57	1/27/08	5/8 SM 3/8 BR	11.2	0.06
11t	2465690	LMC WFC WAVE AMIGO 5U/95	2/3/08	5/8 SM 3/8 BR	11.2	0.06

Fall 2013 Simbrah Carcass Weight Trait Leaders

Rank	ASA No	Name	DOB	Breed Codes	EPD	Acc
1	2495219	PRR DR. DAZZLE 911U	12/2/08	5/8 SM 3/8 BR	55.9	0.39
2	2488653	J7N VICMAR 420	9/25/08	5/8 SM 3/8 BR	53.3	0.44
3	2305018	SMITH NU WAVE II	12/10/04	3/4 SM 1/4 BR	49.9	0.54
4	2162556	NF SMITH SARGEANT	2/18/02	3/4 SM 1/4 BR	48.9	0.57
5	2381099	SMITH ISGRIG CHARISMATIC	2/26/07	5/8 SM 3/8 BR	46.9	0.41
6	2545552	SMITH HAGAN TSUNAMI	3/5/09	5/8 SM 3/8 BR	46.2	0.22
7	2236625	PRR POTENTIAL 108N	12/2/03	5/8 SM 3/8 BR	46	0.4
8	2473077	ZZ JALAPENO U889	2/18/08	5/8 SM 1/4 BR 1/8 AR	45.6	0.42
9	2513488	PRR APACHE 539W	1/8/09	5/8 SM 3/8 BR	44.5	0.23
10	2242894	WCC PRINCE P01	3/2/04	5/8 SM 3/8 BR	44.3	0.51
11	2439925	PRR TARGET 826T	9/10/07	5/8 SM 3/8 BR	42.5	0.46
12	2495222	PRR STAR TROOPER 924U	12/15/08	5/8 SM 3/8 BR	41.9	0.33

Fall 2013 Simbrah Yield Grade Trait Leaders

Rank	ASA No	Name	DOB	Breed Codes	EPD	Acc
1	2446550	LMC LF GOLIATH T211	11/2/07	3/8 SM 3/8 BV 1/4 BR	-0.49	0.11
2t	2495222	PRR STAR TROOPER 924U	12/15/08	5/8 SM 3/8 BR	-0.39	0.26
2t	2144815	LM FULL HOUSE 5L/133	10/8/01	5/8 SM 3/8 BR	-0.39	0.35
4t	2513488	PRR APACHE 539W	1/8/09	5/8 SM 3/8 BR	-0.38	0.17
4t	2473989	PRR RULER 447U	4/21/08	5/8 SM 3/8 BR	-0.38	0.31
6	2447044	LMC HS ROCCO 5T/201	10/31/07	5/8 SM 3/8 BR	-0.37	0.3
7	2173119	PRR PIONEER 961M	3/4/02	3/4 SM 1/4 BR	-0.36	0.42
8t	2243476	SSS EHJAH 324P	1/24/04	5/8 SM 3/8 BR	-0.34	0.24
8t	2403131	BCRC POWER PAULO 737	2/23/07	3/4 SM 1/4 BR	-0.34	0.1
8t	2451293	PRR PORTFOLIO 408U	2/15/08	5/8 SM 3/8 BR	-0.34	0.24
8t	2401512	PVF CARLTON 744	3/3/07	5/8 SM 1/4 AN 1/8 BR	-0.34	0.08
8t	2397605	ZZ MR T799	2/26/07	5/8 SM 3/8 BR	-0.34	0.22

Fall 2013 Simbrah Marbling Trait Leaders

Rank	ASA No	Name	DOB	Breed Codes	EPD	Acc
1	2473077	ZZ JALAPENO U889	2/18/08	5/8 SM 1/4 BR 1/8 AR	0.18	0.23
2	2495219	PRR DR. DAZZLE 911U	12/2/08	5/8 SM 3/8 BR	0.16	0.43
3	2470233	ZZ MR FULL FIGURES U907	3/9/08	3/4 SM 1/4 BR	0.15	0.27
4t	2447832	RX SHIRAZ U803	3/2/08	5/8 SM 3/8 BR	0.14	0.55
4t	2430695	PRR BIG MAX 149T	10/21/07	5/8 SM 3/8 BR	0.14	0.25
6t	2294600	RX RLIGHT R521	3/16/05	5/8 SM 1/4 BR 1/8 AR	0.13	0.2
6t	2372264	HAGAN MCDREAMY 53S	7/18/06	3/4 SM 1/4 BR	0.13	0.18
8	2397576	ZZ MR COMPOSITE T829	3/16/07	5/8 SM 1/4 BR 1/8 AR	0.12	0.15
9t	2496648	TRIPLE P MAIN DREAM	10/31/08	3/4 SM 1/4 BR	0.11	0.16
9t	2286648	LMC GODFATHER 5R/83	2/27/05	5/8 SM 3/8 BR	0.11	0.15
11t	2447044	LMC HS ROCCO 5T/201	10/31/07	5/8 SM 3/8 BR	0.1	0.39
11t	2341008	PRR PREVAIL 774S	1/17/06	5/8 SM 3/8 BR	0.1	0.45

Successful calf crops are dependent on checking the bull before breeding season

**Bryan Kutz,
University of Arkansas
Animal Science Staff**

Improvement in next year's calf crop is dependent upon the breeding decisions you make. Breeding success depends on the reproductive health of both the cow and bull. Because a bull is expected to service various numbers of cows, the potential fertility of the bull is much more important than determining the fertility of any individual cow.

What genetic and physical improvements need to be made? What sire breed would best complement the cow base? How many bulls are needed to correctly breed the cows? Do I need to use two different sire breeds? These are all very relevant questions that need to be answered as the spring breeding season approaches. Nonetheless, without a proper breeding soundness exam (BSE), these decisions may not matter. The greatest bull with bad semen will not produce calves.

It is essential to evaluate bulls every year before breeding starts because the fertility of a bull can vary from year to year. The breeding soundness exam should be performed 30 to 60 days before the start of breeding season. It is important to allow sufficient time to replace questionable bulls. This time allotment will also allow for enough time for stressed animals to recover and be tested again before the beginning of the breeding season.

The physical examination includes evaluating body condition, feet and leg structure and the general health of each bull. The external evaluation of the reproductive tract includes evaluation of the testes, spermatic cords and epididymis. Scrotal circumference is an important measure since it is directly related to the total mass of sperm producing tissue, sperm cell normality and

the onset of puberty in the bull and his female offspring.

Depending on the breed type of the bull being test-

ed, the minimum scrotal circumference can vary. Maximum testicular size usually occurs at 4 to 6 years of age. With advanc-

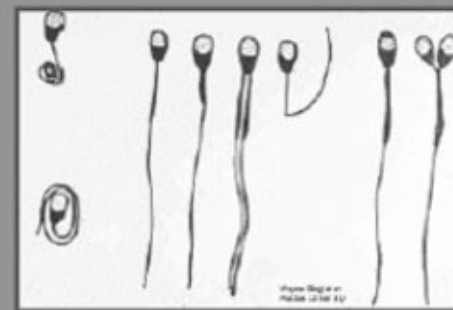
ing age, testicular tissue may lose some sperm producing capacity. Therefore, scrotal circumference measurements are not as accu-

rate after this time. The table illustrates the minimum scrotal circumference

(SC) that will allow a bull to pass a breeding soundness exam (Continued on page 6)

Recommended Scrotal Circumferences		
Age	Minimum SC (cm)	Good
< 15 months	30	> 34
15-18 months	31	> 36
18-21 months	32	> 37
21-24 months	33	> 38
> 24 months	34	> 39

Examples of Abnormal Sperm



Picture provided by Purdue University.

The EVENT

synonymous with

**OFFERING
100 LOTS OF ELITE
SIMBRAH CATTLE**

10.26.13

Quality



Synergy VI features progeny and influence of some of the most powerful sires and cow families in the breed.

FOUNDATION DONORS • PAIRS • BREDS • YOUNG SIRE PROSPECTS
FANCY OPEN SHOW HEIFERS • EMBRYOS

A young one-quarter x three-quarter heifer, sired by Smith Bella Xtra Stretch, a Sargeant x Bella son and out of Smith Made to Luv N Red, a Vintage x Schnazzie bred cow. Schnazzie is a foundation Simmental donor for Smith Genetics. This Diamond RF heifer is eligible to show in San Antonio and compete for the \$10,000 in 2014.



A genetic package from Smith CRC Nu Perfection will sell. Offered by Smith Genetics and Rodenbeck Family. Daughter of Smith Nu Wave II and out of Hagan Smith Irreplaceable. 2012 National and International Champion.



A genetic package from Smith Wentz Superior Mom will sell. She was a many time champion for Candice Tindle, including the junior shows of Fort Worth, Houston and Superbowl.

Bella Bella- The influence of Smith Bella Bella will be featured in Synergy. She is the dam to Smith Hi Caliber, 2013 National Percentage Reserve Grand Champion Bull, owned by Smith Genetics; Smith CRC Bella Vive, 2013 AJSR Grand Champion Percentage Heifer, owned by Caleb Rodenbeck and Smith's Bella Delight, a donor in the Smith Farms program.

5:00 PM • OCTOBER 26TH • SMITH GENETICS, GIDDINGS, TX
Quality like you have never seen in the Simbrah breed sells here...

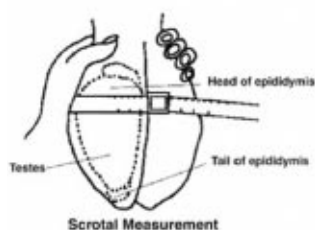
SALE PARTICIPANTS INCLUDE:

7N Ranch: 956-460-6002
BETM Ranch: 956-607-5515
Baring Cattle Company: 210-867-6651
Burch Farms: 713-206-2579
Diamond RF Farms: 713-412-4487
Hagan Cattle Co.: 361-293-4720
La Muñeca Cattle Co.: 956-383-7566
McCrary Farms: 903-278-6819

Pine Ridge Ranch: 214-850-6308
Reavis Farms: 956-207-1447
Smith Farms: 817-874-3431
Smith Genetics: 512-587-7896
Southwestern Farms: 409-423-9060
Triple J Ranch: 409-782-1029
Triple P Ranch: 713-906-3992

JUNIORS: If you have purchased a heifer from a sale participant, it is eligible for the \$15,000 Showcase. Also heifers purchased in sale will have registration papers transferred by November 1st.

For additional information call any of the participants or Tim Smith, 512-587-7896 or email smithgenetics1@gmail.com. More information available on the Synergy tab at www.smithgenetics.com.



Circumference measurements should be taken at the widest point on the scrotum.

Follow us on **facebook**

Successful...
(Continued from page 5)

able in accepting the minimum, but rather select bulls that are average or above average for the breed and the age of the

bull. Therefore the “Good” column of the table is a better guideline for bull selection.

There is great variation in scrotal circumference between breeds of bulls. Measurements of many English and European bulls have shown that year-

ling bulls should have scrotal circumference of at least 30 cm and that by 20 months of age should have a scrotal circumference of

at least 32 cm. Brahman breed bulls will have smaller testes at the younger ages, and they will reach

(Continued on page 9)

Fall 2013 Simbrah EPDs...
(Continued from pag4B)

Fall 2013 Simbrah Warner-Bratzler Shear Force Trait Leaders

Rank	ASA No	Name	DOB	Breed Codes	EPD	Acc
1	2447044	LMC HS ROCCO 5T/201	10/31/07	5/8 SM 3/8 BR	1.12	0.35
2	2495222	PRR STAR TROOPER 924U	12/15/08	5/8 SM 3/8 BR	1.04	0.25
3	2495219	PRR DR. DAZZLE 911U	12/2/08	5/8 SM 3/8 BR	0.96	0.39
4	2513488	PRR APACHE 539W	1/8/09	5/8 SM 3/8 BR	0.92	0.18
5	2446430	PRR OPTIMUM 892T	12/22/07	5/8 SM 3/8 BR	0.87	0.4
6	2495230	PRR AMMO POWER 977U	10/27/08	5/8 SM 3/8 BR	0.83	0.24
7	2243476	SSS EHJAH 324P	1/24/04	5/8 SM 3/8 BR	0.82	0.16
8	2144815	LM FULL HOUSE 5L/133	10/8/01	5/8 SM 3/8 BR	0.8	0.32
9	2227127	BCC BOOMERANG	4/12/04	3/4 SM 1/4 BR	0.76	0.17
10	2451293	PRR PORTFOLIO 408U	2/15/08	5/8 SM 3/8 BR	0.73	0.21
11t	2341008	PRR PREVAIL 774S	1/17/06	5/8 SM 3/8 BR	0.72	0.41
11t	2430695	PRR BIG MAX 149T	10/21/07	5/8 SM 3/8 BR	0.72	0.22


Rank	ASA No	Name	DOB	Breed Codes	EPD	Acc
1	2470233	ZZ MR FULL FIGURES U907	3/9/08	3/4 SM 1/4 BR	-0.5	0.08
2	2278892	PRR RED AMMO 506P	9/4/04	5/8 SM 3/8 BR	-0.47	0.02
3	2473989	PRR RULER 447U	4/21/08	5/8 SM 3/8 BR	-0.37	0.03
4	2526677	RFI SMITH THUNDERSTRUCK	4/5/09	3/4 SM 1/4 BR	-0.34	0.38
5t	2496648	TRIPLE P MAIN DREAM	10/31/08	3/4 SM 1/4 BR	-0.32	0.08
5t	2372264	HAGAN MCDREAMY 53S	7/18/06	3/4 SM 1/4 BR	-0.32	0.08
7	2518598	6G/LMC RAJIN CAJUN W908	3/4/09	3/4 SM 1/4 BR	-0.21	0.03
8	2305018	SMITH NU WAVE II	12/10/04	3/4 SM 1/4 BR	-0.17	0.23
9t	2408387	LMC RB AMIGO 5T/60	3/16/07	5/8 SM 3/8 BR	-0.14	0.01
9t	2252007	LMC MAGNUM 5M/486	10/27/02	5/8 SM 3/8 BR	-0.14	0.06
9t	2382421	LMC AMMO AMIGO 5S/280	9/28/06	5/8 SM 3/8 BR	-0.14	0.01
12	2401489	PVF BLACK POWER 736	2/9/07	5/8 SM 3/8 BR	-0.13	0.01

RX

RX

RX Prescription composites

Bred to take the HEAT and produce a quality product



RX Fire Y146

(Son of London's Fire)

Many more sons of RX London's Fire (CMP) will sell Dec. 14.

RX


SIMBRAH

Sarah J. (Sally) Buxkemper

2617 CR 400 • Ballinger, Texas 76821 USA

325-442-4501

sbuxkemper@wildblue.net • www.rxsimbrah.com



BRUSH COUNTRY BULLS

Bulls December 14, 2013

Tom Brothers Ranch

Campbellton, TX


Fall 2013 Simbrah All Purpose Index (API) Trait Leaders

Rank	ASA No	Name	DOB	Breed Codes	API
1	2305018	SMITH NU WAVE II	12/10/04	3/4 SM 1/4 BR	114.6
2	2526677	RFI SMITH THUNDERSTRUCK	4/5/09	3/4 SM 1/4 BR	109.8
3	2400752	SMITH NF SIMPLY GREAT	10/10/06	3/4 SM 1/4 BR	108.7
4	2372264	HAGAN MCDREAMY 53S	7/18/06	3/4 SM 1/4 BR	104.5
5	2381099	SMITH ISGRIG CHARISMATIC	2/26/07	5/8 SM 3/8 BR	104.1
6	2537907	LMC RHINO 5W/367	11/18/09	5/8 SM 3/8 BR	99.3
7	2518598	6G/LMC RAJIN CAJUN W908	3/4/09	3/4 SM 1/4 BR	98.8
8	2513493	PRR CHOICE 565W	3/22/09	5/8 SM 3/8 BR	93.8
9	2347626	FEA REX	4/5/06	3/4 SM 1/4 BR	93.7
10	2341008	PRR PREVAIL 774S	1/17/06	5/8 SM 3/8 BR	93.5
11	2496648	TRIPLE P MAIN DREAM	10/31/08	3/4 SM 1/4 BR	93.3
12	2439317	LMC RFI SMITH HURRICANE	5/20/07	3/4 SM 1/4 BR	92.6


Fall 2013 Simbrah Terminal Index (TI) Trait Leaders

Rank	ASA No	Name	DOB	Breed Codes	TI
1	2305018	SMITH NU WAVE II	12/10/04	3/4 SM 1/4 BR	98.7
2	2381099	SMITH ISGRIG CHARISMATIC	2/26/07	5/8 SM 3/8 BR	79.1
3	2545552	SMITH HAGAN TSUNAMI	3/5/09	5/8 SM 3/8 BR	73.8
4	2162556	NF SMITH SARGEANT	2/18/02	3/4 SM 1/4 BR	72.7
5	2465690	LMC WFC WAVE AMIGO 5U/95	2/3/08	5/8 SM 3/8 BR	69.2
6	2473077	ZZ JALAPENO U889	2/18/08	5/8 SM 1/4 BR 1/8 AR	68.4
7	2465658	LMC WFC MOOSE 5U/57	1/27/08	5/8 SM 3/8 BR	67.4
8	2465659	LMC WFC WAVE AMIGO 5U/58	1/27/08	5/8 SM 3/8 BR	67.2
9	2518598	6G/LMC RAJIN CAJUN W908	3/4/09	3/4 SM 1/4 BR	66.6
10	2400752	SMITH NF SIMPLY GREAT	10/10/06	3/4 SM 1/4 BR	65.1
11	2526677	RFI SMITH THUNDERSTRUCK	4/5/09	3/4 SM 1/4 BR	64.6
12	2341008	PRR PREVAIL 774S	1/17/06	5/8 SM 3/8 BR	64.4

The Best Is Yet To Come...



This year we had a great year in and out of the show ring. We would like to thank all of our junior showmen for their support this year.



The only way to go is up! We are expecting great things this year. We are excited to see what this show season has in store. We would like to wish Andrew Cano, Tyler Denny, Jennifer Gomez, Joe Martinez, Kenzie Martinez, Daniel Salinas & Victoria Villanueva great success with their show projects!

H

32667 N. Expressway 281
Edinburg, TX 78542
(956) 381-8933
LHHRanch1954@aol.com
Find us on Facebook

Dr. Lucas Hinojosa
Mrs. Norma Hinojosa
Dr. Daniel Hinojosa

Building With Some Of The Best Genetics In The Breed!


We've been raising Simbrahs for quite some time and we are continually impressed with the way the cattle get out and hustle, take the heat and humidity and most of all perform!

We are very excited about our new young herd sire—Smith Wentz Carl. He's sired by Smith Nu Wave II and out of the great LMC Diva cow.

Smith Nu Wave II has sired more calves than any other sire in the last five years and there are many reasons for that. Nu Wave II has been ranked as the #1 bull for EPDs in the breed, only to be moved to the #2 spot by one of his sons. He delivers strong performance to his progeny, as he is currently ranked #1 in weaning, yearling, carcass weight, backfat, All Purpose Index and Terminal Index; top 2% for maternal weaning weight; top 3% for docility; top 4% for calving ease; top 5% for birth; top 10% for maternal calving ease.

Diva has many outstanding individuals to her credit, including the \$42,000 National and International Champion, Dream Girl, as well as her full sibs, Rita and Wave Amigo, Diamond Diva and Blackfoot.

Carl ranks in the top 1% of the breed for weaning and Terminal Index; top 3% for yearling; top 5% for carcass weight; top 10% for maternal weaning weight, docility and All Purpose Index; top 15% for marbling; top 20% for REA; and top 30% for birth and backfat. We are excited about what he brings our program and we have his calves arriving this Fall.



Smith Nu Wave II-sire of our new herd sire.



LMC Diva-dam of our new herd sire.

SIMBRAH REPLACEMENT FEMALES, SHOW HEIFERS AND BULLS FOR SALE

Lazy SF Ranch

Craig and Doug Schultz

6899 Rossignol Road • Bell City, LA 70630

Craig 337-802-2173 – Doug 337-540-8901

lazysfranch@live.com

Glossary of Beef Production Terms

Acknowledgments

This material was made available by the national Beef Improvement Federation.

Accuracy (of selection)--Correlation between an animal's unknown actual breeding value and a calculated estimated breeding value.

Average daily gain (ADG)--Measurement of daily body weight change in animal on a feed test. Most bull tests are 140 or 160 days in length.

Adjusted weaning weight (WW)--An unshrunk, off-the-cow weight adjusted to 205 days of age and to a mature dam age equivalence.

Adjusted yearling weight (YW)--An unshrunk weight adjusted to either 365, 452, or 550 days of age and for age of dam.

Ad lib feeding--No limit

placed on amount of feed intake. Self-feeding or allowing cattle to consume feed on a free-choice basis.

Alleles--Alternate forms of genes. Because genes occur in pairs in body cells, one gene of a pair may have one effect and another gene of that same pair (allele) may have a different effect

on the same trait.

Artificial insemination (A.I.)--The technique of placing semen from the male in the reproductive tract of the female by means other than natural service.

Backcross--The mating of a two-breed crossbred offspring back to one of its parental breeds. Example: A Hereford-Angus cross cow bred back to an Angus bull.

Beef carcass data service--A program whereby producers, for a fee, can receive carcass evaluation data on their cattle by using a special "carcass data" eartag for their slaughter animals. See county extension director breed representative, Beef Cattle Improvement Association representative, or area office of USDA meat grading service for information.

Beef Improvement Federation (BIF)--A federation of organizations, businesses, and individuals interested or involved in performance evaluation of beef cattle. The purposes of BIF are to bring about uniformity of procedures, development of programs, cooperation among interested entities, education of its members and the ultimate consumers of performance evaluation methods, and to build confidence of the beef industry in the principles and potentials of performance testing.

Birth weight (BW)--The weight of a calf taken within 24 hours after birth. Heavy birth weights tend to be correlated with calving problems, but the conformation of the calf and the cow are contributing factors.

Breeder--In most beef breed associations, the owner of the dam of a calf at the time she was mated or bred to produce that calf.

Breeding program goals--The objective or "direction" of breed-

er's selection programs. Goals are basic decisions breeders must make to give "direction" to their breeding program. Goals should vary among breeders due to relative genetic merit of their cattle, their resources, and their markets.

Breeding value--Value of an animal as a parent. The working definition is twice the difference between a very large number of progeny and the population aver-

age when individuals are mated at random within the population and all progeny are managed alike. The difference is doubled because only a sample half (one gene of each pair) is transmitted from a parent to each progeny. Breeding value exists for each trait and is dependent on the population in which the animal is evaluated. For a given trait, an individual can be

(Continued on page 10)

SimGenetics
PROFIT THROUGH SCIENCE
American Simmental Association

We do the Science.
You Make the Profit.

Ed Creason

Director of Field Services & Member Operations

573-823-5635

email: ecreason@simmgene.com

www.simmental.org

HOPE TO SEE Y'ALL AT THE ELITE AND SYNERGY VI



Congratulations to Micah Perkins on your Grand Champion Female at the MAS VIII Showdown with LMC Daydream, a LMC Rhino X LMC WFC Dream Girl, daughter.



We will be consigning cattle to the Elite and Synergy VI, including females exposed to MR. BETM Cyclone, who is a Smith Nu Wave II x LM She Moves son.

A BIG HEARTY THANKS TO OUR RECENT BUYERS

7N Ranch • Britt Larson • Brody Hill • Clark A. Toolson
Clay Harmon • Dawson Raub • Flonaca • Four Oaks Ranch
Hadley Baker • Jay Anderson • Jordan Hinkley
Jorge Urriegas • La Muneca - Flores • La Reina Cattle Company
Lorelai Hill • Micah Perkins • Pine Ridge Ranch
Robert Stavino • Scott Connors • Sigifredo Cantu
Sklar & Son • Will Hussey • Will Scagin

Dr. Ernesto Guerra Family
betmguerra@yahoo.com

Ranch Manager: Ted Tschirhart • 210/827-7949
Sales Consultant: Victor Guerra • 956/607-5515

Located in Castroville, Texas



Add Some La Morra To Your Program

Just look at our offering for the inaugural Elite Sale

September 21

Hagan Cattle Co. • Yoakum, Texas

the Elite



LMC BETM Wallflower SW300 - DOB: 8/20/09. Polled Purebred. Sired by LMC VG Go Getter and out of T-Cat bred dam. She is one of our great young females and we will be selling a flush in her! Wallflower is the dam of high selling Simbrah lot at MAS VII, who was purchased by Ronnie Smith for \$10,000 for half interest. Hagan Cattle purchased this dam's second heifer at MAS VIII.



J7N Athena A11 - DOB: 3/9/13. Polled/Scurred Purebred. Sired by our senior sire, Whiskey River, who is a Johnnie Walker Black son, out of our proven donor M9. She is fancy.



J7N Affinity Rose A07 - DOB: 3/5/13. Polled Purebred. Another Whiskey River daughter, with the powerful Hagans Ante Up featured on the bottom side of the pedigree. This heifer is loaded with body.



J7N Ariel A05 - DOB: 2-23-13. Polled Purebred. She is a genetic combination of Whiskey River and Ante Up, also. She will be very competitive in the show ring.



J7N Zabby Z40 - DOB: 12-25-12. Polled Purebred. Sire by J7N Whiskey River and out of our Cristal cow. She is sound, with a long level hip and has style!

Our lots are eligible for the \$25,000 Elite Show, MAS and Superbowl and include special semen privileges from our bull battery!

For additional details, visit www.theelitesale.com



NUESTRA CASA ES SU CASA!! • Joe B & Nelda Rodriguez
2854 CR 331 • Floresville, TX 78114

(H) 830.393.8338 • (M) 210.275.0839 • joeb@lamorracattle.com

MAS Sponsor • Superbowl Sponsor
The Elite Sale Sponsor

Committed To Breeding GREAT ONES!

Smith Farms is committed to the Simbrah breed, because we believe in the many advantages the breed brings the cattle industry—longevity, milking and mothering ability, added pounds and environmental adaptability.

We're also committed to breeding some of the best and we've acquired great young females for our donor nucleus. These donors represent proven lines of cattle and are destined to be the next generation of greatness.

We invite you to follow our program and add our genetics to your lineup.



Smith's Bella Delight - Sired by NF Smith Sargeant, who may be the strongest maternal sire ever in the breed. And the bottom side of her pedigree reflects Smith Bella Bella, a female that has rewritten the breed's history books. Delight is now in our donor lineup and we are excited to see her continue the great Bella excellence.



SF Just That 135Z-A young polled three-quarter x one-quarter polled donor. She is sired by Dream On and out of the 3U cow, who is a She Moves x Full House daughter. A genetic powerhouse and we are excited about her progeny that will be arriving soon.

WE HAVE BULLS FOR SALE - CONTACT US

Smith Farms' Cattle Will Sell In These Events:



Ronnie & Susan Smith
7736 FM 428 • Denton, Texas 76208
817-625-4366, office
817-874-3431, cell
susan@americanrecyclinginc.com



September 21st
Hagan Cattle Co. • Yoakum, Texas
Our offering will be 6 lots, including a fancy Smith Nu Wave II daughter.



October 26th
Smith Genetics • Giddings, Texas
We are providing breeders with a unique breeding up opportunity. Our offering will include a set of 1/4 x 3/4 bred heifers and 3/8 x 5/8 virgin heifers.

Challenges...

(Continued from page 1)

involvement in the cattle

industry.

"Simbrahs have been very good to us and they have proved to us they can

work, even in this historic drought," Estes concludes.

Cliff and Sandra Marshall became involved in the cattle business, largely due to the death of her father, who had put together a small commercial operation outside of Giddings, Texas. His mother-in-law, Annette Menzel, wanted to continue the farm and the herd.

"I had no background in cattle, but Sandra did, as she had grown up on the farm and majored in animal science at Texas A&M University (TAMU), but we had not been active in the management end. So

once my father-in-law was gone, we realized we needed to figure out what needed to be done and become

very involved," Marshall describes.

They live 60 minutes away in Austin, where they

own an insurance business and have one son, Aaron, who is still in high school. They also have a daughter, Kristin, who is an animal science major at Texas A&M University and another daughter, Kaitlyn, who is involved in the family insurance business.

"Our daughter, Kristin, enjoyed spending time at her grandparents place, and was involved in showing heifers through 4-H with her grandparent's assistance. This, along with her mom's ties to Aggieland and her degree, led her to TAMU. She has been an asset and is learning things in her degree plan that we are applying to our management practices," he adds.

Today the program has about 25 head of females, which is down considerably due to the drought that continues to plague Central Texas. The herd is predominately Beefmaster based and have very spotted phenotypes.

Marshall quickly realized that their calves were discounted at the local sale barns because of their color patterns. He also would drive by Smith Genetics on his way to the ranch and noticed their solid color Simbrah bulls. The family already had purchased one of Kristin's show heifers from the Simbrah Synergy Sale, hosted by the neighboring outfit, so Marshall began visiting with owner, Tim Smith about the direction of their breeding program.

The Marshalls purchased a three-quarter Simmental x one-quarter solid black percentage Simbrah bull from Smith and have been very pleased with the results.

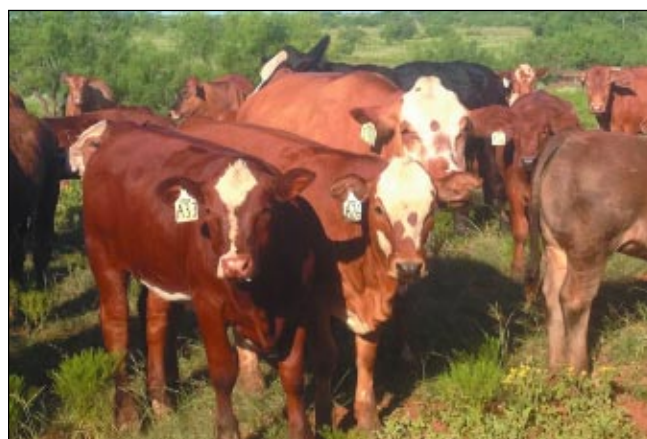
"That bull has a very good disposition and during the breeding season, he really got out and bred the cows. We have had no calving problems and the calves arrive with lots of vigor—and the calves are coming solid black or red, which was the main thing we wanted to achieve by switching to Simbrah. Plus, Smith has really become a strong resource for us concerning our operation," says Marshall.

Because the family lives an hour away convenience traits like calving ease, the polled factor, docility, along with the economic factor of pounds is important to the family operation. They like what the Simbrah breed has added

(Continued on page 9)



This is one of the Pine Ridge Ranch Simbrah bulls working in the Estes Family program.



Estes finds the Simbrah female to be a good mother, strong milker, and her calves grow fast, require less maintenance, since they are insect and disease resistant, plus they forage well.

the Elite

SIMBRAH AND SIMMENTAL SALE

SEPTEMBER 21-22, 2013 - YOAKUM, TEXAS

SALE: SATURDAY, SEPTEMBER 21, 2013: 4:00 P.M.

SHOW: SUNDAY, SEPTEMBER 22, 2013: 9:00 A.M.

WWW.THEELITESALE.COM

7N RANCH

ASHORN SIMMENTAL

BARING CATTLE CO.

BENNY CANO CATTLE

BET M RANCH

BURCH FARMS

FLY CATCHER SIMMENTAL

FOSTER BROS. FARMS

HAGAN CATTLE CO.

HIDDEN OAKS CATTLE CO.

HENLY FARMS

LABLANQUITA RANCH

LAMORRA RANCH

OUTBACK RANCH

OWEN BROTHERS CATTLE CO.

PINERIDGE RANCH

REAVIS FARMS

RISEING SUN RANCH

SEALE CATTLE CO.

SHIPWRECK CATTLE CO.

SKLAR & SON SIMBRAH

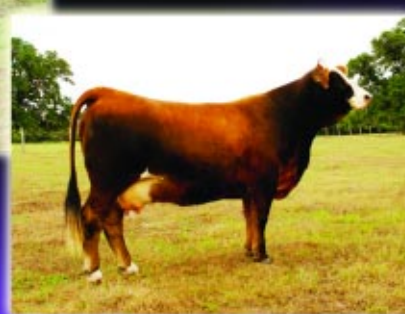
SVJ SIMMENTAL & D&D CATTLE

SMITH FARMS

SMITH GENETICS

TURKEY CREEK CATTLE CO.

WENTZ FARMING



CATTLE SOLD BY CONSIGNORS ARE ELIGIBLE

TO SHOW ON SUNDAY FOR OVER \$25,000

IN CASH AND PRIZES

THURSDAY: SEPTEMBER 19, 2013

12 NOON-ALL CATTLE MUST BE IN PLACE

FRIDAY: SEPTEMBER 20, 2013

SALE CATTLE ON DISPLAY ALL DAY 7:00 PM SALE PREVIEW

8:00 PM DINNER

SATURDAY: SEPTEMBER 21, 2013

SUNDAY: SEPTEMBER 22, 2013

9:00 AM SHOW ORDER SIMMENTAL PUREBRED SHOW

SIMBRAH PUREBRED SHOW SIMBRAH PERCENTAGE SHOW

12:00 PM LUNCH WILL BE SERVED

CONTACT HAGAN CATTLE CO. OR MP3 CATTLE SERVICES

REESE: AND Codi 361-293-4721 • REESEHAGAN@AOL.COM

PAUL MAULSBY 979-587-2835 MP3CATTLESERVICES@GMAIL.COM



Successful...

(Continued from page 6)

maturity at an older age. The Brahman breed bulls will have adult scrotal circumferences similar to other beef breeds.

Semen

Morphology and Motility

The semen is collected and evaluated for motility and morphology. This will assure that the largest percent of the sperm is moving in a forward motion and that there are very few abnormal shapes. Semen morphology is the study of the shape of sperm in the ejaculate and is measured as the percentage of normal and abnormal sperm.

An abnormality is classified as either primary or secondary, depending on whether the defect occurs in the testis or after the sperm leaves the testis. Reduced fertility usually occurs when the number of primary defects is greater than 18 to 20 percent. Secondary defects are not generally as serious and do not affect fertility unless a large number are present.

Abnormalities are inherited and can be induced through stress, infection, increased testicular temperature or other factors. Abnormal sperm in semen may be either temporary or permanent. Some bulls may need to be tested again in six to eight weeks.

After completion and only when the bull has been deemed a "satisfactory breeder" will you benefit from your pre-breeding season selection decisions. After your bulls are with the cows, it is a good management practice to watch them throughout the breeding season. Sometimes bulls will fail to get some cows bred, especially after heavy service. Bulls may come up lame or may develop some unforeseen reproductive injury. In any case, they will need to be replaced immediately to help keep your calving season within the ideal 60 to 75 days.

Remember that a bull is only as good as his semen. A cow is responsible for half the genetic material in only one calf each year, while the bull is responsible for half the genetic material in 20 to 50 calves. The bull's ability to locate cows in estrus and breed them is clearly vital to a successful breeding program.

Challenges...

(Continued from page 8)

to their program.

"We're seeing increased weaning weights of over 50 lbs per calf and the calves are cleaner in their lines with a lot more eye appeal and consistency. The best part is that we're seeing higher prices when we sell the calves at our local sale barn," explains Marshall.

They plan to retain the best heifer calves and use them as replacements, so that they can add the mothering ability of the Simbrah breed to their program.

The Marshalls are very

representative of today's cattleman—who have other occupations, have limited acreage and run small numbers of cattle. In addition, they devote just a portion of their time or weekends to the chores. This segment needs low maintenance breeds or

breed types and genetics that will produce pounds that add to the bottom line of the operation.

For the Marshalls,

Simbrah has given them the low maintenance they needed and the extra weight on payday they desired.



Simbrah genetics crossed on the Beefmaster based cowherd have resulted in calves with predominately solid color patterns for the Menzel/Marshall family operation.



Cliff Marshall and his family have been impressed with the added pounds they have gained in their calves by using Simbrah bulls on their predominately Beefmaster based cowherd.

Pine Ridge Simbrahs Engineered To Excel In The World's Warm Weather Grasslands

Our Simbrah specifications were designed 33 years ago to develop very efficient cattle for hot weather climates, where the majority of beef cattle in the world are raised.

We are in the registered business to deliver a product that can produce heart healthy tender beef for the consumer and pounds of profit for the commercial segment. And our cattle excel in show rings across the globe!

You will find cattle carrying the PRR prefix throughout Mexico, Central America and South Africa.

Visit our unique program and see bulls developing our program. Pine Ridge Ranch cattle are predominately polled, not linebred and the emphasis is on efficiency and carcass superiority.



PRR RITO 545W ASA # 2513491

Sired by PRR Perfection 82S and out of PRR Clarita 522P

Pine Ridge Steers Fed At Graham Land & Cattle

- Average Carcass Weight 804 lbs.
- REA 14.9 sq.in
- Graded 100% Choice
- With no prime and no Standard. Choice offers a very pleasant and nutrient rich eating experience and decreases saturated fat by over 50%
- Average YG 2.3
- 100% YG1, YG2 and YG3

Visit us at

www.simbrah.com

TX

PINE RIDGE RANCH

Home of Ranger Livestock, Athens, Texas

JANE AND BILL TRAVIS

9876 Plano Road • Dallas, Tx 75238

Weekdays: 214-369-0990

Home: 214-348-1618

Cell: 214-850-6308

Email: billtravis@bigplanet.com

1 TRIP - 2 STOPS Sour Lake, Texas

Sour Lake -
80 miles east of
Houston, 60 miles
west of Lake Charles.

**Home of Triple J Ranch and
Carpenter Ranch Partnership**
80 Registered Simbrah
**Featuring the She Moves, Pure Diamond
and Priceless Cow Families**
Replacement Heifers • Show Steers • Bulls
250 Simbrah Cross Heifers
For Commercial Use
Breeding Simbrahs For 30 Years

Visitors Welcome!
Stop In For Coffee And We'll Talk Cows



Triple J Ranch
Jake and Mary Tortorice
409-782-1029 • 409-753-2864
409-782-8053
mmt1000@aol.com

Carpenter Ranch Partnership
Owners: John, Ann, Hunter and Travis Carpenter
Managers: Jake and Amber Tortorice
409-782-5892 • 409-287-3234
409-781-2475

Terms...

(Continued from page 7)

an above average producer in one herd and a below average producer in another herd.

British breeds--Breeds of cattle such as Angus, Hereford, and Shorthorn originating in Great Britain.

Calf crop--The number or percentage of calves produced within a herd in a given year relative to the number of cows and heifers exposed to breeding.

Calving difficulty (Dystocia)--Abnormal or difficult labor, causing difficulty in delivering the fetus and/or placenta.

Calving season--The season(s) of the year when the calves are born. Limiting calving seasons is the first step to performance testing the whole herd, accurate records, and consolidated management practices.

Carcass evaluation--Techniques of measuring components of quality and quantity in carcasses.

Carcass merit--Desirability of a carcass relative to quantity of components (muscle, fat, and bone), USDA quality grade, plus potential eating qualities.

Carcass quality grad--An estimate of palatability based primarily on marbling and maturity and generally to a lesser extent on color, texture, and firmness of lean. Days on feed and fat thickness (of 0.25 inches or more) are comparable to quality grade in estimating eating quality.

Carcass quantity--Amount of salable meat (muscle) the carcass will yield. Cutability is an estimate of this. (See its definition.)

Carrier--A heterozygous individual having one recessive gene and one dominant gene for a given

pair of genes (alleles). For example, an animal with one gene for polledness and one gene for horns will be polled but can produce horned offspring when mated to another animal carrying the gene for horns.

Central test--A location where animals are assembled from several herds to evaluate differences in certain performance traits under uniform management

conditions.

Chromosome--Chromosomes are long DNA molecules on which genes (the basic genetic codes) are located. Domestic cattle have 30 pairs of chromosomes.

Closed herd--A herd in which no outside breeding stock (cattle) are introduced.

Collateral relatives--Relatives of an individual that are not its

(Continued on page 11)

WE'RE BUILDING WITH THE BEST!



We chose the Simbrah breed and we're choosing to build our program with some of the best genetics.

We have the influence of Smith Priceless, LMC Oprah, LMC Diva, Smith Nu Wave II, Smith Isgrig Charismatic, NF Smith Sargeant and Smith Black Mystic—some of the most proven and profitable genetics in Simbrah!

We're building with the best and we invite you to consider Johnson Cattle Co. for your Simbrah cattle.

Smith Johnson Top Price--One of the young females in our program. Sired by Smith Isgrig Charismatic, who ranks in the top 1% of the breed for API and TI and out of Smith Priceless.

JOHNSON CATTLE CO.

Wayne Johnson 830/391-2571
Kenny Johnson 361/438-3413
wjohson4945@sbcglobal.net
Tim Smith consultant
512/587-7896
smithgenetics1@gmail.com
Follow us on Facebook--Johnson Cattle Company, Kenedy, Texas

BULL POWER WE'VE GOT IT

We've invested heavily in Simbrah with some of the most proven cow families represented and we have acquired some of the most exciting young sired to lead the program as well. Bulls with genetic greatness, strong EPDs and powerful phenotypes are part of the Southwestern Farms' program.

WE ARE A YOUNG PROGRAM,
BUT WE THINK THE POTENTIAL
FOR GREATNESS IS UNLIMITED!



SMITH WISEGUY

A polled son of Smith Nu Wave II and out of Triple P Juliet. He is a full brother to Candice Tindle's many time champion, Wentz Smith Superior Mom and Caleb Rodenbeck's AJSR champion. Wiseguy's EPDs rank him in the top 1% for weaning, yearling and TI; top 5% for API; top 10% for carcass weight and top 15% for maternal weaning weight, docility and backfat.

Owned with Smith Genetics.



SMITH WENTZ BLACKFOOT

Sired by Smith Nu Wave II and out of the great LMC Diva. He is polled and ranks in the top 1% for weaning, yearling, maternal weaning weight, carcass weight, backfat and TI. He was the reserve intermediate champion at the National Show.

Owned with Smith Genetics.



RFI REAL DEAL

A polled son of Smith Evan, out of an Also N Red bred daughter. His EPDs rank him in the top 2% for calving ease and API; top 3% for TI, top 10% for birth, weaning, yearling; top 15% for carcass weight and top 20% for maternal weaning weight. He was the reserve bull calf champion at the International Show.

Owned with Smith Genetics, Burch Farms, Diamond RF Farms and Reavis Farms.



SMITH XTRA ORDINARY

His EPDs rank in the top 1% for calving ease; API and TI; top 2% for birth and weaning; top 4% for yearling, top 5% for maternal calving ease and top 15% for maternal weaning weight, carcass weight and marbling. He is sired by Charismatic and is out of a Madam W.

Owned with Smith Genetics and Reavis Farms.

BREEDING AGE
COMMERCIAL SIMBRAH
BULLS FOR SALE

SOUTHWESTERN Farms

RAY AND SUZANNE HILL • MARK AND SAMANTHA PALMORE
607 PR 5215, Kirbyville, Texas 75956
409-423-9060 or 409-651-2792
southwesternfarms@gmail.com • sampalmore@yahoo.com

Terms...

(Continued from page 10)

ancestors or descendants. Brothers and sisters are an example of collateral relatives.

Conception--The fertilization of the ovum (egg). The act of conceiving or becoming pregnant.

Congenital--Acquired during prenatal life. Condition exists at or dates from birth. Often used in the context of congenital (birth) defects.

Contemporary group--A group of cattle that are of the same breed and sex and have been raised in the same management group (same location on the same feed and pasture). Contemporary groups should include as many cattle as can be accurately compared.

Correlation--A measure of how two traits vary together. A correlation of + 1.00 means that as one trait increases the other also increases a perfect positive relationship. A correlation of -1.00 means that as one trait increases the other decreases--a perfect negative, or inverse, relationship. A correlation of 0.00 means that as one trait increases, the other may increase or decrease--no consistent relationship. Correlation coefficients may vary between +1.00 and -1.00.

Crossbreeding--The mating of animals of different breeds (or species). Crossbreeding usually results in heterosis (hybrid vigor).

Culling--The process of eliminating less productive or less desirable cattle from a herd.

Cutability--An estimate of the percentage of salable meat (mus-

cle) from a carcass versus percentage of waste fat. Percentage of retail yield of carcass weight can be estimated by a USDA prediction evaluation that includes hot carcass weight, ribeye area, fat thickness, and estimated percent of kidney, pelvic, and heart fat.

Dam--The female parent.

Deviation--difference between an individual record and the average for that trait for that contemporary group. These differences sum to zero when the correct average is used. A ratio deviation is the ratio less the average ratio or 100.

Dominance--Dominant genes affect the phenotype when present in either homozygous or heterozygous condition. A dominant gene need only be obtained from one parent to achieve expression.

(Continued on page 12)

• CALENDAR •

September 8-West Texas State Fair Junior Simbrah Show, Abilene, Texas

September 20-East Texas Junior Simbrah Show, Tyler, Texas

September 21-22-The Elite Sale, Hagan Cattle Company, Yoakum, Texas

October 5-La Muneca's 26th Annual Junior Roundup, Linn, Texas

October 12-Heart of Texas Junior American Beef Heifers, Waco, Texas

October 12-Heart of Texas Simmental/Simbrah Association Sale, Hearne, Texas

October 17-State Fair of Texas Junior Simbrah Show, Dallas, Texas

October 18-State Fair of Texas Open Simbrah Show, Dallas, Texas

October 26-27-Synergy VI Show and Sale, Giddings, Texas

November 16-Brush Country Bull Sale Open House, Campbellton, Texas

December 14-2nd Annual Brush Country Bull Sale, Campbellton, Texas

Black Oak Ranch

Presents

Oaks Mr. Solitaire 062U



Fall 2012 calf crop weaning weights: No Creep
Bulls: average age: 212 days old, weight 696 lbs
Heifers: average age: 208 days old, weight 606 lbs

Solitaire not only gives them growth but he also keeps them color correct.



For information on Solitaire:

Contact

Kenneth Airheart

205 FM 1254

Mineola, TX 75773

Cell: 903-539-1666

Fax: 903-967-2108

www.texasblackoakranch.com

Circle

Circle These Lots In The Catalog the Elite

These Hagan heifers took their owners to the winner's circle!



Congratulations to Gage Spence as he took Hagan Maiden 07Z to the coveted Grand Champion Simbrah title at the 2013 Texas Junior Simmental/Simbrah Association Futurity.

Congratulations to Callie Henley, as she and Hagan Rockstar 550Z, went to the winner's circle as the 2013 Texas Junior Simmental/Simbrah Association Futurity Junior Champion Simbrah.

Congratulations to Gage Spence & Callie Henley with their Hagan Heifers!

Winners like these can be yours from our offering at The Elite!



6Y

Hagan Divine 6Y - Sired by the Simmental sire, Chopper and out of our great 50 Cow, one of the winningest females in the breed. 5Y is a full sister to Hagan American Chopper, the 2013 National Percentage Grand Champion. Hagan Cattle and Henly Farms are offering a flush in this red, three-quarter X one-quarter.



75A

Hagan Allure 75A - Sired by Shamoo and out of a Sargeant bred dam. She's a purebred, polled, black baldy. She is loaded with eye appeal, structural soundness and potential.



5A

Hagan Showtime 5A - Sired by FBFS Wheelman, the 2012 Denver Champion, Showtime is super sound, big bodied and has the look of a champion. Red and a three-quarter x one-quarter. Percentage Simbrahs are eligible for the San Antonio \$10,000 now.



86A

Hagan Cadillac 86A - A top heifer in our spring crop, she is sired by a Red Bullet son and Power House bred dam. She's red, polled and a purebred, loaded with bone and body.

SEPTEMBER 21ST

Hosted at Hagan Cattle Co. in Yoakum, Texas

For complete details on sale and the \$25,000 junior show see www.theelitesale.com



KIM HAGAN FAMILY

1364 FM 2543 • YOAKUM, TX 77995

KIM: 361/293-4720 • REESE (Sales and Shows): 361/293-4721

WWW.HAGANCATTLE.COM • REESEHAGAN@AOL.COM

Terms...

(Continued from page 11)

Dystocia (calving difficulty)--Abnormal or difficult labor causing difficulty in delivering the fetus and/or placenta.

Economic value--The net return within a herd for making a pound or percentage change in the trait in question.

Effective progeny number (EPN)--An indication of the amount of information available for estimation of expected progeny differences in sire evaluation. It is a function of number of progeny but is adjusted for their distribution among herds and contemporary groups and for the number of contemporaries by other sires. EPN is less than the actual number because the distribution of progeny is never ideal.

Environment--All external (nongenetic) conditions that influence the reproduction, production, and carcass merit of cattle.

Embryo--A fertilized ovum (egg) in the earlier stages of prenatal development usually prior to development of body parts.

Embryo transfer--Removing fertilized ova (embryos) from one cow (donor dam) and placing these embryos into other cows (host cows), usually accompanied by hormone-induced superovulation of the donor dam. More calves can be obtained from cows of superior breeding value by this technique. Only proven producers should become donor dams.

Estimate--The process of calculating a particular value from data (verb). The value itself obtained from data (noun). The idea is that the true value is being obtained from the calculated value within

limits of sampling variation.

Estimated breeding value (EBV)--An estimate of an individual's true breeding value for a trait based on the performance of the individual and close relatives for the trait. EBV is a systematic way of combining available performance information on the individual, brothers, and sisters of the individual, and the progeny of the individual.

Estrus (heat)--The recurrent, restricted period of sexual receptivity in cows and heifers. Nonpregnant cows and heifers usually come into heat 18 to 21 days following their previous estrus.

Expected progeny difference (EPD)--The difference in performance to be expected from future progeny of a sire, compared with that expected from future progeny of the average bull in the

same test. EPD is an estimate based on progeny testing and is equal to one-half the estimate of breeding value obtainable from the progeny test records.

F1--Offspring resulting from the mating of a purebred (straight-bred) bull to purebred (straight-bred) females of another breed.

Feed conversion (feed efficiency)--Units of feed consumed per unit of weight gained. Also the production (meat, milk) per unit of feed consumed.

Frame score--A score based on subjective evaluation of height or actual measurement of hip height. This score is related to slaughter weights at which cattle will grade choice or have comparable amounts of fat cover over the loin eye at the 12th to 13th rib. Freemartin--Female born twin to a bull calf (approximately 9 out of 10 will not conceive).

Generation interval--Average age of the parents when the offspring destined to replace them are born. A generation represents the average rate of turnover of a herd.

Genes--The basic units of heredity that occur in pairs and have their effect in pairs in the individual, but which are transmitted singly (one or the other gene at random of each pair) from each parent to offspring.

Genetic correlations--Correlations between two traits that arise because some of the same genes affect both traits. When two traits (i.e., weaning and yearling weight) are positively and highly correlated to one another successful selection for one trait will result in an increase in the other trait. When two traits are negatively and highly correlated (i.e., birth weight and calving ease) to one another, successful selection for one trait will result in

a decrease in the other trait.

Genotype--Actual genetic makeup (constitution) of an individual determined by its genes or germplasm. For example, there are two genotypes for the polled phenotype [PP (homozygous dominant) and Pp (heterozygote)].

Genotype-environment interaction--Variation in the relative performance of different genotypes from one environment to another. For example, the "best" cattle (genotypes) for one environment may not be the "best" for another environment.

Gonad--The organ that produces the reproductive cells, the testicle in the male and the ovaries in the female.

Half-sibs--Individuals having the same sire or dam. Half-brothers and/or half-sisters.

Heat synchronization--Causing a group of cows or heifers to exhibit heat together at one time by artificial manipulation of the estrous cycle.

Heifer--A female of the cattle species less than three years of age that has not borne a calf.

Heredity--The transmission of genetic or physical traits of parents to their offspring.

Heritability--The proportion of the differences among cattle, measured or observed, that is transmitted to the offspring. Heritability varies from zero to one. The higher the heritability of a trait, the more accurately does the individual performance predict breeding value and the more rapid should be the response due to selection for that trait.

Heritability estimate--An estimate of the proportion of the total phenotypic variation between individuals for a certain trait that is due to heredity. More specifically, hereditary variation due to

additive gene action.

Heterosis (hybrid vigor)--Amount by which measured traits of the crossbreds exceed the average of the two or more purebreds that are mated to produce the crossbreds.

Heterozygous--Genes of a specific pair (alleles) are different in an individual.

Homozygous--Genes of a specific pair (alleles) are alike in an individual.

Inbreeding--Production of offspring from parents more closely related than the average of a population. Inbreeding increases the proportion of homozygous gene pairs and decreases the proportion of heterozygous gene pairs. Also, inbreeding increases prepotency and facilitates expression of undesirable recessive genes.

Independent culling levels--Selection of culling based on cattle meeting specific levels of performance for each trait included in the breeder's selection program. For example, a breeder could cull all heifers with weaning weights below 400 pounds (or those in the bottom 20 percent on weaning weight) and yearling weights below 650 pounds (or those in the bottom 40 percent).

Involution--The return of an organ to its normal size or condition after enlargement, as of the uterus after parturition. A decline in size or activity of other tissues; the mammary gland tissues normally involute with advancing lactation.

Linebreeding--A form of inbreeding in which an attempt is made to concentrate the inheritance of some one ancestor, or line of ancestors, in a herd. The average relationship of the individuals in the herd to this ancestor (outstanding individual or individuals)

(Continued on page 13)



12-21 mo. old bulls Simbrah, Simmental & SimAngus™HT

December 14, 2013

Tom Brothers Ranch

Campbellton, TX



Our Cattle are bred to take the HEAT, HUMIDITY and INSECTS in challenging environments while maintaining fertility, performance and carcass quality.

FILEGONIA CATTLE COMPANY

Joe Mercer
327 CR 459
Lott, TX 76656
www.filegoniacattle.com

Beth Mercer
Home/Office: 254-984-2225
Cell: 956-802-6995
bethmercer@wildblue.net

Producing Red & Black Purebred Simbrah Composite Simbrah SimAngus™ HT Replacement Heifers Herd Bull Prospects





Wentz Cattle Company Dispersal

Selling at the Heart of Texas

Simmental/Simbrah Sale

October 12, 2013 • Drew Ranch, Hearne, Texas

This is the complete dispersal of the original Wentz Cattle Co. herd representing over 45 years of breeding. Sadly due to the last ten years of drought and sales of land, we have decided to offer these genetics.

They have been selected for fertility, performance and the ability survive in the harsh South Texas environment.

All cattle, semen and embryos will sell. Nothing held back. All the cattle have been bred and raised by us.

64 Females—15 pairs, 12 open heifers and 37 bred females sell
2 Herd Sires
Several lots of semen and embryos.

Cattle are multi-generation Simbrah and most are polled. The genetic line of NF Smith Sargeant is very strong in this offering.

Certified Free Herd #5855. Cattle have been enrolled in ASA THE program also.



WCC Xter X05--Many of the cows selling will be bred to this young bull. He was a division champion at the 2011 RGV BIA Bull Test. He is a Sargeant grandson. His EPDs include strong Milk, Maternal Weaning Weight numbers, and solid numbers in the other categories. He sells.




U02--Bred heifers like this will sell. S15--Young pairs like this sell.


For More Information Contact Billy Wentz or Roy Schwake, sale manager at 214/542-8162, schwakecattle@aol.com



Billy Wentz
P.O. Box 129
Olmito, Texas 78575
(956) 607-5793
bill@wentzcattle.com

WE VALUE PROVEN GENETICS!

At McCrary Farms, we have built our Simmental and Simbrah herds on proven, predictable genetics. We have added daughters of some of the top cow families and utilize sires that add strong genetics, performance, EPDs, and marketing power too!




October 26, 2013


We are located in Northeast Texas and would love to visit with you about our program and the cattle we have that could work for your outfit!

McCrary Farms

Mark and Martha McCrary
903/667-5135 • 903/278-6819
mamamc4@aol.com
307 North Runnels • DeKalb, Texas 75559
We accept calf scramble certificates.



Smith Priceless Wish--This is a daughter of the great Smith Priceless, who's calves have been in high demand—in fact more than a quarter of a million dollars of Priceless progeny have been sold. Priceless Wish is sired by Smith Nu Approach, a top three-quarter blood sire. We are selling a daughter of Priceless Wish and Smith Satisfies in Synergy VI.



RFI Tinkerbell--She was very successful on the show circuit, including the grand champion title in San Antonio. This is a daughter of Smith Nu Wave II and her dam is a Sargeant daughter—a genetic combination that has proven to be powerful, very predictable and very successful in the breed. We will be campaigning a daughter of Tinkerbell and Smith Nu Approach this year. We will be selling two daughters in Synergy in partnership with Smith Genetics and Reavis Farms. One is a percentage heifer sired by Smith McCrary Andy Black and a purebred by Nu Approach.

Terms...

(Continued from page 12)

is increased by linebreeding.

Linecross--Offspring produced by crossing two or more inbred lines.

Marbling--The specks of fat (intramuscular fat) distributed in muscular tissue. Marbling is usually evaluated in the ribeye between the 12th and 13th rib.

Metabolic body size--The weight of the animal raised to the 3/4 power (W^{0.75}); a figure indicative of metabolic needs and of the feed required to maintain a certain body weight.

Metabolism--The transformation by which energy is made available for body uses.

Most probable producing ability (MPPA)--An estimate of a cow's future productivity for a trait (such as progeny weaning weight ratio) based on her past productivity. For example, a cow's MPPA for weaning ratio is calculated from the cow's average progeny weaning ratio, the number of her progeny with weaning records, and the repeatability of weaning weight.

National sire evaluation--Programs of sire evaluation conducted by breed associations to compare sires on a progeny test basis. Carefully conducted national reference sire evaluation programs give unbiased estimates of expected progeny differences. Sire evaluations based on field data rely on large numbers of progeny per sire to compensate for possible favoritism or bias for sires within herds.

Nonadditive gene effects--Favorable effects or actions produced by specific gene pairs or combinations. Nonadditive gene action is the primary cause of het-

erosis. Nonadditive gene action occurs when the heterozygous genotype is not intermediate in phenotypic value to the two homozygous genotypes.

Number of contemporaries--The number of animals of similar breed, sex, and age, against which an animal was compared in performance tests. The greater the number of contemporaries, the greater the accuracy of comparisons.

Open--A term commonly used to indicate a non-pregnant female.

Optimum level of performance--The most profitable or favorable ranges in levels of performance for the economically important traits in a given environment and management system. For example, although many cows produce too little milk, in every management system there is a point beyond which higher levels of milk production may reduce fertility and decrease profit.

Outcrossing--Mating of individuals that are less closely related than the average of the breed. Commercial breeders and some purebred breeders should be outcrossing by periodically adding new sires that are unrelated to their cow herd. This outcrossing should reduce the possibility of loss of vigor due to inbreeding.

Ovulation--Release of the female germ cell (egg) by the ovary. Cows usually ovulate several hours (up to 15 hours) after the end of estrus or standing heat.

Parturition--The act of giving birth; calving.

Pedigree--A tabulation of names of ancestors, usually only those of the three to five closest generations.

Performance data--The record of the individual animal for reproduction, production, and

possibly carcass merit. Traits included would be birth, weaning and yearling weights, calving ease, calving interval, milk production, etc.

Performance pedigree--A pedigree that includes performance records of ancestors, half and full sibs, and progeny in addition to the usual pedigree information. Also, the performance information is systematically combined to list estimated breeding values on the pedigrees by some breed associations.

Performance testing--The systematic collection of comparative production information for use in decision making to improve efficiency and profitability of beef production. Differences in performance among cattle must be utilized in decision making for performance testing to be beneficial. The most useful performance records for management, selection, and promotion decisions will vary among purebred breeders and for purebred breeders compared with commercial cattle producers.

Phenotype--The visible or measurable expression of a character; for example, weaning weight, postweaning gain, reproduction, etc. Phenotype is influenced by genotype and environment.

Phenotypic correlations--Correlations between two traits caused by both genetic and environmental factors influencing both traits.

Polled--Naturally hornless cattle. Having no horns or scurs.

Pounds of retail cuts per day of age--A measure of cutability and growth combined, it is calculated as follows: cutability times carcass weight divided by age in days. Also, it is reported as lean weight per day of age (LWDA) by

some associations.

Possible change--The variation (either plus or minus) that is possible for each expected progeny difference (EPD). This measurement of error in prediction or estimation of EPD decreases as the number of offspring per sire increases.

Prepotent--The ability of a parent to transmit its characteristics on its offspring so that they resemble that parent, or each other, more than usual. Homozygous dominant individuals are prepotent. Also, inbred cattle tend to be more prepotent than outbred cattle.

Progeny records--The average, comparative performance of the progeny of sires and dams.

Progeny testing--Evaluating the genotype of an individual by a study of its progeny records.

Puberty--The age at which the

reproductive organs become functionally operative and secondary sex characteristics begin to develop.

Purebred--An animal of known ancestry within a recognized breed that is eligible for registry in the official herdbook of that breed.

Qualitative traits--Those traits in which there is a sharp distinction between phenotypes, such as black and white or polled and horned. Usually, only one or few pairs of genes are involved in the expression of qualitative traits.

Quantitative trait--Those traits in which there is no sharp distinction between phenotypes, with a gradual variation from one phenotype to another, such as weaning weight. Usually, many gene pairs are involved, as well as environmental influences.

Random mating--A system of

mating where every female (cow and/or heifer) has an equal or random chance of being assigned to any bull used for breeding in a particular breeding season. Random mating is required for accurate progeny tests.

Rate of genetic improvement--Rate of improvement per unit of time (year). The rate of improvement is dependent on: (1) heritability of traits considered; (2) selection differentials; (3) genetic correlations among traits considered; (4) generation interval in the herd; and (5) the number of traits for which selections are made.

Reach--See Selection differential.

Recessive gene--Recessive genes affect the phenotype only when present in a homozygous condition. Recessive genes must be received from both parents
(Continued on page 15)

**October 12th
Drew Ranch
Hearne, Texas**



The HOTSSA Fall Fest Sale

Featuring Simmental & Simbrah

Also Wentz Cattle Co will be offering 60+ head in the sale as they must move cattle due to the drought.

For more information contact:
**SCHWAKE
CATTLE SERVICES**
 214/542-8162
schwakecattle@aol.com

Heart of Texas
Simmental/Simbrah Association
 Jim Carter, president
 219 Goetz Rd. Cameron, Texas 76520
 254/697-1078 jhc ranch@sbcglobal.net



It's a SIMBRAH

DBR Land and Cattle

**Striving for the best,
focused on quality.**

P.O. Box 1477 • Decatur, TX 76234

**Inquiries welcome at
940-393-3266**

Functional, Data Driven Cattle

Tom Brothers Ranch has been collecting data on our cattle for decades. We rely on measurements and visual appraisal to improve our cattle. We have collected and reported 100% on Total Herd Enrollment Reporting for our 2012 calf crop-- birth weight, calving ease and weaning weights. Our goal this fall is to collect 100% on yearling weight, yearling hip height and ultrasound which would then earn us performance advocate status. We invite you to come spend a day evaluating our program and our data.

We are hosting the Brush Country Bull Sale December 14th. The majority of our Simbrah bulls selling in this sale rank in the top 1% of the breed for All Purpose Index and we will have a nice selection of SimAngus™ HT bulls.

AI sires represented in our Simbrah and SimAngus™ HT Brush Country offering include: HTP SVF In Dew Time, Mr NLC Upgrade, MCM Top Grade, W/C Efficiency 835X, TNT Dual Focus, and J7N Vicmar.

Simbrah and SimAngus™ HT calves coming this fall sired by: Hook's Yukon 80Y, TNT Axis, W/C United, TNT Dual Focus, and 6G/LMC Rajin Cajun.



SELLING 100+ BULLS

Simbrah, SimAngus™ HT, SimAngus™ and Angus
bulls from 6 programs.

December 14

Tom Brothers Ranch

View the bulls at your leisure
November 16 at Tom Brothers Ranch
See our website for more details.



Birth Weights, Weaning Weights, Ultrasound Data



Bulls like this one from TBR sell December 14!



www.tombrothersranch.com
 770 CR 412 • Campbellton, Texas 78008
 Ellen Tom • 210/213-0020
ellen@tombrothersranch.com
 Philip Tom • se habla español
 512/296-6845
philip@tombrothersranch.com

News...

(Continued from page 3)

Futurity. This is a fun-filled, educational, family oriented event that anyone interested in is invited to attend.

For more information, please call Carlos or Sister Guerra at 956-383-7566 or

802-1641 or email them at lamunecacattle@aol.com or call Brad Cowan, Hidalgo County Agent at 956-383-1026 or b-cowan@tamu.edu.

HOTSSA Fall Fest Sale scheduled October 12th

The Heart of Texas Simmental/Simbrah Associa-

tion (HOTSSA) will hold their Fall Fest Sale, October 12th, Hearne, Texas. The sale will include a diverse offering of Simgenetics, and Simbrah will be part of the sale lineup. Also included in the offering is the dispersal of the Wentz Cattle Co., owned by Billy Wentz.

The event will be held at Drew Ranch, 10767 FM 391, Hearne, Texas. For additional information contact Schwake Cattle Services, 214/542-8162 or schwakecattle@aol.com or Jim Carter, HOTSSA president, 254/697-1078 or jhcranch@sbcglobal.net

The Elite Cattle Sale and Show to be held

The Elite Cattle Sale and Show will be held at Hagan Cattle Company, September 21st and 22nd, Yoakum, Texas. It will feature Simmental and Simbrah genetics from some of the elite herds in the country. The sale will be at 4 p.m. on Saturday, the 21st and the show will be the following morning at 9 a.m. The show will award \$25,000 in prizes and monies to junior Simmental and Simbrah exhibitors. For additional information contact Reese Hagan at

reesehagan@aol.com or at 361/293-4721 or visit their website www.theelitesale.com.

Participants include 7N Ranch, Ashorn Simmental, Baring Cattle Co., Benny Cano, BETM Ranch, Burch Farms, Flycatcher Simmental, Foster Bros. Hagan Cattle Co., Hidden Oaks Cattle Co., Henly Farms, La Blanquita Ranch, La Morra Ranch, Outback Ranch, Owen Bros., Pine Ridge Ranch, Reavis Farms, Rising Sun Ranch, Seale Cattle Co. Shipwreck Cattle Co., Sklar & Son, SVJ Simmental/D&D, Smith Farms, Smith Genetics, Turkey Creek Cattle and Wentz Farming.

Synergy VI Set For October 25-27th

Simbrah Synergy VI will be held October 25-27 at Smith Genetics, Giddings, Texas. The weekend event includes an educational skill-a-thon and photography competition for all, sale and the \$15,000 Synergy Showcase junior show.

The sale will be the evening Saturday, October 26th and includes over 125 lots of cattle. The lots are predominately Simbrah. Bulls, embryos, donors,

pairs, breds and some fancy show prospects sell.

The skill-a-thon and photography competition will be held Saturday afternoon. There is no entry fee, just sign up at the event and bring your photos. The Synergy Showcase will award \$15,000 to junior exhibitors of cattle purchased from the 15 Synergy participants and/or purchased in the sale. The Showcase includes five divisions of showmanship in addition to the Simbrah, Percentage and Simmental shows and you must pre-enter. Showmanship will be on the 26th and the cattle show will be the 27th.

Participants in this year's sale include Baring Cattle Company, BETM Ranch, Diamond RF Farms, Hagan Cattle Company La Muneca Ranch, McCrary Farms, Pine Ridge Ranch, Reavis Farms, Smith Genetics, Triple J Ranch, Triple P Ranch, Southwestern Farms, 7N Ranch, and Smith Farms.

For additional details, entry forms, rules and sale accommodations, visit www.smithgenetics.com or call 512/587-7896. You can also follow the event on Facebook.


Brush Country Bull Sale to include Simbrah bulls

The Brush Country Bull Sale will feature 100+ bulls on December 14, 2013 at Tom Brothers Ranch, Campbellton, Texas. The offering will include red and black Simmentals, SimAngus, Simbrah, SimAngus HT and Angus bulls.

The offering ranges in age from 14 months to two-year-old plus and many are AI sired. The offering represents the programs of Tom Brothers Ranch, RX Simbrah, Filegonia Cattle, Co., Premier Beef, Ford's Double S Ranch and DA Cattle Co.

The group is hosting a special preview and open house on November 16th at Tom Brothers Ranch. Those that attend the open house and have total purchases of \$2,000 or more in the sale will receive a \$200 credit. Everyone is invited to attend the open house to see the bulls and evaluate them prior to the sale.

For additional information and to request a catalog, contact Ellen Tom, 210/213-0020 or ellen@tombrothersranch.com. Details can also be found at www.tombrothersranch.com.



Shallow Water Ranch

WE HAVE THE BLACK SIMBRAHS YOU NEED

A number of homozygous black bulls for sale private treaty, as well as show prospects.

Bred to be black and with solid producing EPDs.

LOOK FOR OUR BULLS AT THE SAN ANTONIO SALE IN FEBRUARY 2014 ALSO.

Scramble Certificates Welcomed.
Breeding Registered BLACK Simbrah Since 1993.

Shallow Water Ranch
21501 CR 496 • Rising Star, Texas 76471
Bobby and Jeanne Thornhill
254/643-6715 (R) • 325/647-4030 (C)

These Percentages Are In Our Favor!

Combining the proven maternal influence of the Priceless cow with the fresh new power of William N Black... Walters Livestock introduces two new herd sire prospects.



WALTERS I AM LEGEND - He is solid from the ground up. He is big footed, solid boned, and ultra sound with tremendous depth and rib shape. This young bull can add all the maternal power and structural soundness your herd could need.



WALTERS HUDSON - He has a new twist on a proven pedigree. He is a younger full embryo sib to Legend, who offers extra thickness and power. He shares the soundness and massiveness of his brother in a moderate, complete package.

These bulls are both three-quarter Simbrah herd sire prospects. You may see them in person at the barn or on display this fall. Limited breeding shares available.



WALTERS SMITH JASMINE - Here is the female we have been waiting for at WLE! She is the breeding combination of Priceless Passion (Baby Goose) and Matt N Black. Her look and pattern speak for itself. This female will carry the style of her dam and the incredible balance, depth and mobility of her sire. Jasmine will be instrumental in taking our Simbrah program to the next level!

WALTERS Livestock Enterprises

Val Walters Family
2300 Cock's Crow Road
Brenham, Texas 77833
979/277-2817
vwalters@bettsfirm.com
walterslivestockenterprises.com

Rodney Finch,
General Manager of Livestock Operations
979/224-2101
rodneyfinch@gmail.com

We're Bringin' Our Elite To The Elite Sale

September 21st

**Hagan Cattle Company,
Yoakum, Texas**

The Cano Family, Top C Cattle Co. is proud to be part of the inaugural Elite Sale. We have selected three lots to represent our program. We invite you to study them and invite you to be part of the big weekend event at The Elite.



LMC FH MUNECA 5W/77 - 5W/77 is a beautiful red baldy female out of LM Full House and a LMC donor sired by the famous Simmy bull, Zima. She is long, deep-bodied with tremendous bone, big footed and is extremely thick. She is a very good momma cow that has produced some very good calves. Even in this extremely hard drought, she is still breeding, calving and raising a really good April show heifer, sired by Uno. 5W/77 is the dam to Top C Sweet and Saucy that sold in Sellabration II to our good friend Jorge Uriegas from Mexico. 5W/77 sells bred to our senior herd sire, LMC RFI SMITH UNO. Uno sired the 2013 RGVS Grand Champion Simbrah Heifer and the 2013 AJSR Reserve Champion Simbrah Bull. Two units of semen are available from UNO to be used on this cow.



LMC FH MUNECA 5S/390 - 5S/390 is another extremely long, big footed, deep sided, thick cow that has produced some really nice calves for us throughout the years. She is sired by LM Full House, the 2004 International Champion bull, who has produced many a champion in his day including LMC Rhino, the 2011 International Champion Simbrah bull. She is an easy keeper, who has managed to keep working for us even in this difficult drought. She also sells bred to our senior herd sire, LMC RFI SMITH UNO, who has been a great investment for us. His top daughter to date is Top C Pretty, who sold at the LMC Sellabration I to Ronnie & Susan Smith for \$21,900. Two units of semen are available from UNO to be used on this cow.



MS LMC REDSKIN NIKKI - This one is gonna hurt, but Nikki was my oldest daughter Sidney's first show heifer and now Sid is off to Texas A&M Kingsville, so we gotta pay the bills. Nikki is a great cow that is also an easy keeper and has done a good job of breeding some very nice calves for us. We sold a heifer out of Nikki to our good friend Jorge Uriegas, who sure likes the good red ones. Nikki is a deep sided, extremely thick, big boned, and big footed cow. She also sells bred to our senior herd sire, LMC RFI SMITH UNO, who is out of the many times champion LMC Johnnie Walker and the famous LM She Moves cow, who is the dam to the 2004 & 2005 International Champion bulls, the 2013 International Champion Female and the 2005 Reserve International Champion bull. Two units of semen are available from UNO to be used on this cow.

Top C Cattle Co.

Benny Cano Family
956/499-5129

2400 S. Jackson Rd. • Pharr, Texas 78577
topccattle@gmail.com

Terms...

(Continued from page 13)

before the phenotype caused by the recessive genes can be observed.

Reference sire--A bull designated to be used as a benchmark in progeny testing other bulls (young sires). Progeny by reference sires in several herds enable comparisons to be made between bulls not producing progeny in the same herd(s).

Regression (regressed)--A measure of the relationship between two variables. The value of one trait can be predicted by knowing the value of the other variable. For example, easily obtained carcass traits (hot carcass weight, fat thickness, ribeye area, and percent of internal fat) are used to predict percent cutability. Likewise, breeding value estimates based on limited

data are regressed back toward the population average to account for the imperfection of this relationship.

Rotational crossbreeding--Systems of crossing two or more breeds where the crossbred females are bred to bulls of the breed contributing the least genes to that female's genotype. Rotation systems maintain relatively high levels of heterosis and produce replacement heifers from within the system. Opportunity to select replacement heifers is greater for rotation systems than for other crossbreeding systems.

Scrotal circumference--A measure of testes size obtained by measuring the distance around the testicles in the scrotum with a circular tape. Related to semen producing capacity and age at puberty of female sibs and progeny.

Scurs--Horny tissue of rudimentary horns that are attached to the skin rather than the bony parts

of the head.

Seedstock breeders--Producers of breeding stock for purebred and commercial breeders. Progressive seedstock breeders have comprehensive programs designed to produce an optimum or desirable combination of economical traits (genetic package) that will ultimately increase the profitability of commercial beef production.

Selection--Causing or allowing certain individuals in a population to produce offspring in the next generation.

Selection differential (reach)--The difference between the average for a trait in selected cattle and the average of the group from which they came. The expected response from selection for a trait is equal to selection differential times the heritability of the trait.

Selection index--A formula that combines performance records from several traits or dif-

ferent measurements of the same trait into a single value for each animal. Selection indexes weigh the traits for their relative net economic importance and their heritabilities plus the genetic associations among the traits.

Sibs--Brothers and sisters of an individual.

Sire summary--Published results of national sire evaluation programs.

Systems approach--An approach to evaluating alternative individuals, breeding programs, and selection schemes that involves assessment of these alternatives in terms of their net impact on all inputs and output in the production system. This approach specifically recognizes that intermediate optimum levels of performance in several traits may be more economically advantageous than maximum performance for any single trait.

Terminal sires--Sires used in a

crossbreeding system where all their progeny, both male and female, are marketed. For example F1 crossbred dams could be bred to sires of a third breed and all calves marketed. Although this system allows maximum heterosis and complementary of breeds, replacement females must come from other herds.

Trait ratio--An expression of an animal's performance for a particular trait relative to the herd or contemporary group average. It is usually calculated for most traits as:

Individual record	----- x 100
Average of animals in group	
The exception to this is birth weight ratio. It is calculated as:	
Adjusted birth wt. of individual	-----
200 -	
Average adjusted birth wt. of contemporary group	
USDA yield grad--Measure-	

ments of carcass cutability categorized into numerical categories with 1 being the leanest and 5 being the fattest. Yield grade and outability are based on the same four carcass traits.

Variance--Variance is a statistic that describes the variation we see in a trait. Without variation, no genetic progress is possible, since genetically superior animals would not be distinguishable from genetically inferior ones.

Weight per day of age (WDA)--Weight of an individual divided by days of age.

Visit: www.simbrahworld.com

American Simbrah - The World's Breed

Please Contact These Progressive Breeders

RND Cattle Services

Roberto N. Davila
Semen, Embryos, Custom AI Services
International Live Cattle Marketing
P.O. Box 2133 • College Station, Texas 77841
(956) 975-9050 • rndcattle@gmail.com
Se habla español



SIMBRAH CATTLE

LITTLEFOOT CATTLE COMPANY

Doug, Karen, Daniel and Kevin Lightfoot
4410 Meyer Road • Needville, Texas 77461
Home: 979/793-3482 • Cell: 832/473-0671
dlitefoot@yahoo.com • www.Littlefootcattle.com

CORONADO CATTLE COMPANY

George Bauslaugh, owner
13311 Queensland
San Antonio, Texas 78232
210/724-0477
gbauslaugh@aol.com

Ronnie Reeves

9660 FM 713
Dale, Texas 78616
512/507-5719
rrtranspo@yahoo.com

KATHY HUTTO & JEFFREY REED

9660 FM 713
Dale, Texas 78616
512/507-5718
Embryos for sale
sired by Charismatic



Featuring Sargeant daughters

Watch for our partnership lots
with Smith Genetics in Synergy VI
Simmental and Simbrah

For cattle information contact
Tim Smith, 512/587-7896



3300 Longmire Drive
College Station, Texas 77845
800-786-4066
979-693-0388
979-693-7994 Fax
carl@bovine-elite.com
www.bovine-elite.com

- * Semen & Embryo Sales
- * A.I. & ET Equipment Sales
- * MVE & Taylor Wharton Tanks
- * A.I./Palpation Clinics
- * TruTest Scales
- * Professional Exporting & Importing
- * Semen & Embryo Warehousing
- * A.I. Consultation

RAFTER M CATTLE

We are sure our cattle will meet all
your Simmental and Simbrah needs.

Joe, Julie & Jennifer Mask
918 Pecan Valley Dr. • Wharton, Texas 77488
979/531-0192
www.raftermcattle.com

Triple P Ranch

Harvey and Marcy Popp
and family
12525 Roy Rd
Pearland, Texas 77581
713/906-3992
happytrails1029@yahoo.com

Temperance Livestock Company

David and Thuy Grimes
Kaleb and Katarina Fontenot
17914 Timber Mist Court
Cypress, Texas 77433
832/594-7530
info@tmplsc.com
www.temperancelivestockcompany.com
Also follow us on

Visit our website!
www.lanegracattle.com

La Negra Cattle Company



Simbrah - Red Brahman
Javier Moreno - 956-607-7408
javierlnc@aol.com
23903 Hinojosa Road
Edinburg, TX 78541



6G Ranch

Fred & Sharon Grahmann Family
P.O. Box 255 • Rock Island, Texas 77470
979/234-3967 (home)
979/758-4759 (Fred's Cell)
361/772-0188 (Michael's cell)
361/798-9942 (Michael's home)
361/798-9024 (fax)
srgrahmann@yahoo.com



La Blaquita RANCH, LLC

Ruben Garcia and Sons, Joaquin and Luis
Mission, Texas • 956/624-1428
www.lablanquitaranch.com

La Muñeca - Where Seedstock
Producers Buy Their Seedstock
October 5th
26th Annual LMC Junior Roundup

La Muñeca Cattle Co.

Carlos X. Guerra Family
P.O. Box 81 • Linn, Texas 78563
956/383-7566 Office • 956/802-1641 Mobile
www.lamunecacattle.com
lamunecacattle@aol.com



120 Shadydale Lane
Coppell, Texas 75019
972/471-1233
www.doaklambert.com



LPJ RANCH
Luis & Vicky Flores Family
Louie 956 457 0205
Patsy 956 821 3947
Jaime 956 457 1088
Louie@chorizosanmanuel.com

Building New
Lines Of
Simbrah With
Outstanding
Simmentals



Bob and Tammy Maiorano
678 Moss Rose Lane • Driftwood, Texas 78619
Tim Smith, consultant
512/587-7896 • smithgenetics1@gmail.com

Wave After Wave of Excellence!

Smith Nu Wave II has dominated sale and show rings now for the past few years. His calves continue to excel and have some of the highest and most consistent EPDs in the breed. He is ranked in the top 1% for six traits, including All Purpose and Terminal Index.

His impact can only be felt by purchasing his calves from owners of the bull. A number of progeny will sell in Synergy VI, October 26th, Smith Genetics, Giddings, Texas

Smith Nu Wave II is involved in the



All These Individuals Have One Thing In Common-They All Carry Smith Nu Wave II Genetics.



Smith Wentz Blackfoot ~ Sired by Smith Nu Wave II and out of LMC Diva. Owned by Smith Genetics and Southwestern Farms. Ranks in the top 1% of the breed for weaning, yearling, maternal weaning weight, carcass weight, backfat and terminal index.



Smith Wentz Wiseguy ~ Sired by Smith Nu Wave II and out of Triple P Juliet. Owned by Smith Genetics and Southwestern Farms. Ranks in the top 1% for weaning, and terminal index; top 3% for yearling and top 5% for API.



Smith Wentz Up Top ~ Sired by Smith Nu Wave II and out of LMC Diva. He is owned by Smith Genetics and Reavis Farms. He ranks in the top 1% of the breed for weaning and TI; top 5% for carcass weight; and top 10% for maternal weaning weight, docility and API.



Smith Isgrig Charismatic ~ Sired by Smith Nu Wave II and out of Smith Eleanour. Owned by Smith Genetics, Burch Farms, Reavis Farms and McCrary Farms. Ranks in the 1% of the breed for seven traits, including all purpose index and terminal index.



Smith Hagan Expressive ~ Sired by Nu Wave II and a full sister to Smith CRC Nu Perfection, the 2012 National and International Grand Champion. Now a donor in the Reavis Farms' program.



Smith Wentz Superior Mom ~ Another Nu Wave II daughter, who was a many time champion for Candice Tindle-including wins at the Fort Worth and Houston Junior Show. Her influence sells in Synergy VI.



Smith Wentz Diamond Diva ~ A Nu Wave II x Diva bred heifer. Owned by Sophie Palmore and has division titles from the AJSR and Houston International Shows to her credit.



Smith Wentz CRC Keepsake ~ A Nu Wave II x Triple P Juliet. Full sister to Smith Wentz Superior Mom. Keepsake was named International Heifer Calf Champion and AJSR Grand Champion.

Nu Wave II... His numbers tell you what he can do and his calves prove to you what we will do and has done!

REAVIS FARMS, INC.

Wayne and Jim Bob Reavis
6801 W. Mile 7 Road
Mission, Texas 78574
956/585-6831
JWReavis@aol.com
www.reavisfarms.com



Ronnie & Susan Smith
7736 FM 428 • Denton, Texas 76209
817-625-4366, O • 817- 874-3431, M
susan@americanrecyclinginc.com



Tim and Haley Smith
P.O. Box 330 • 1316 PR 2231
Giddings, Texas 78942
512/587-7896
smithgenetics1@gmail.com
www.smithgenetics.com